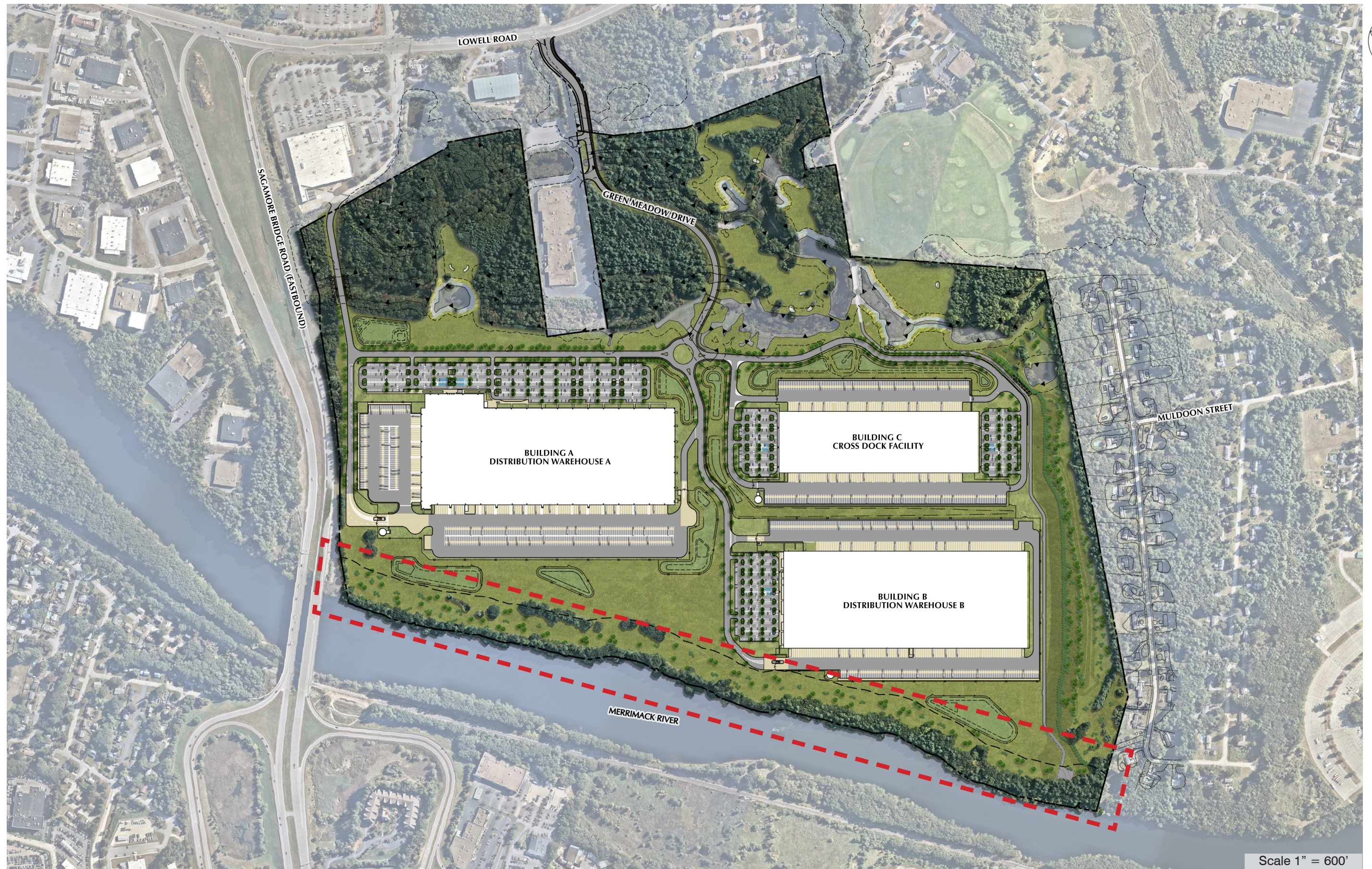
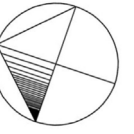


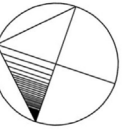
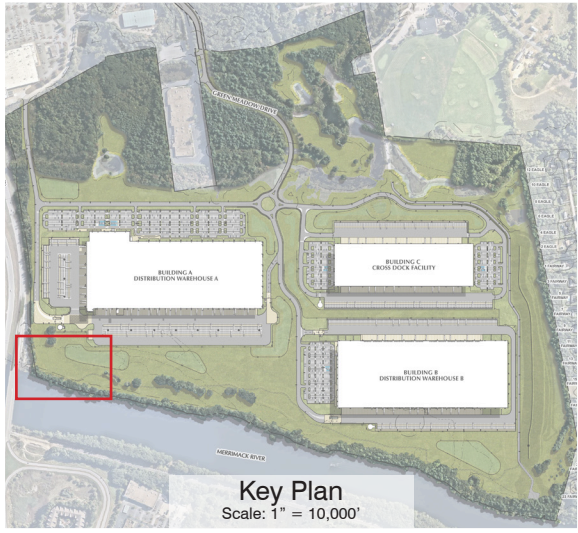
Project Hudson

Conservation Commission Hearing

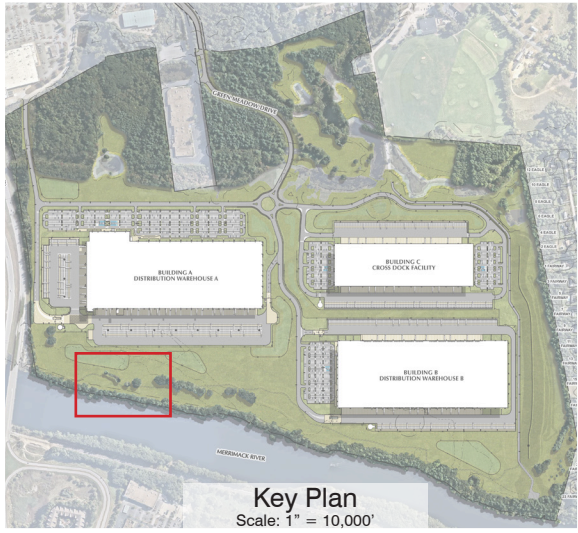
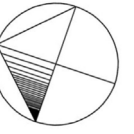
Hudson, NH
December 14, 2020



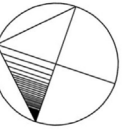
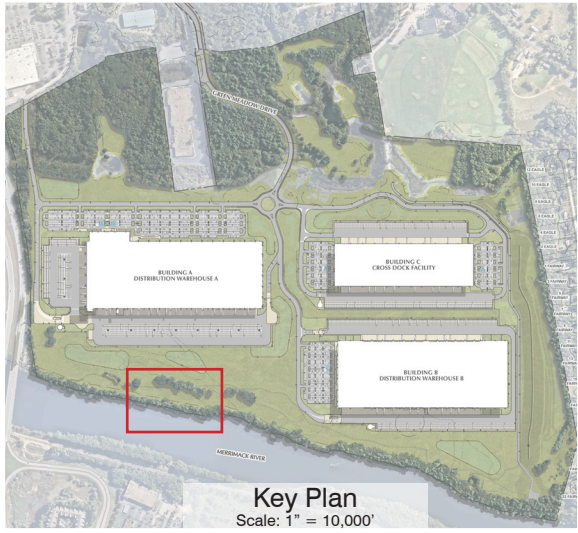
Merrimack Riverfront Buffer



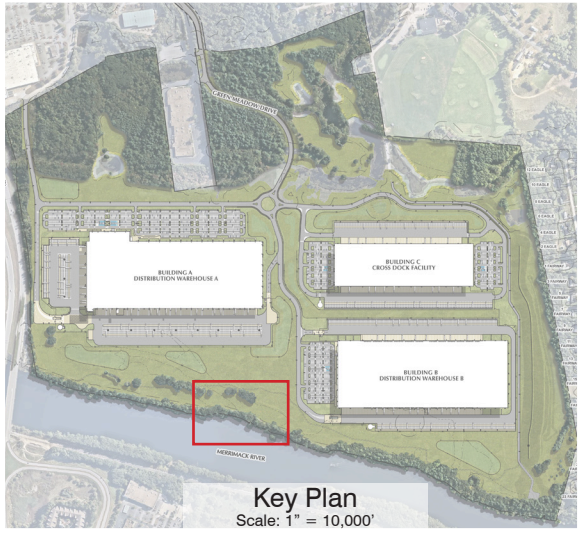
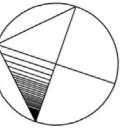
Merrimack Riverfront Buffer



Merrimack Riverfront Buffer



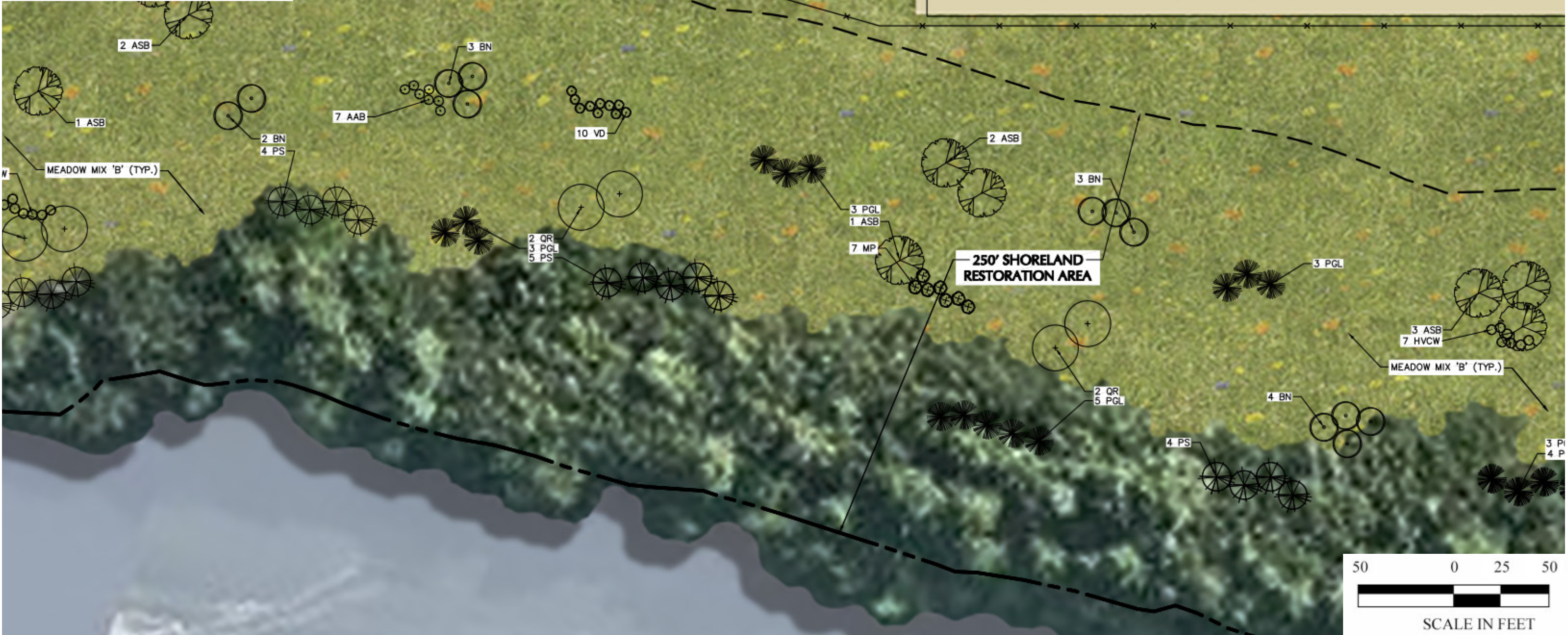
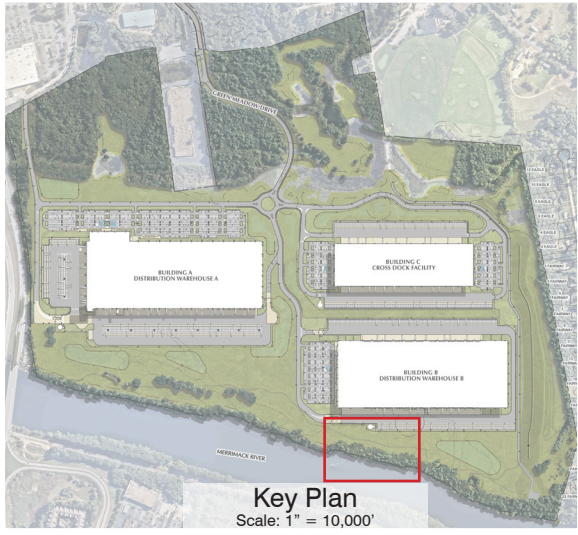
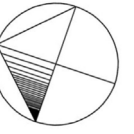
Merrimack Riverfront Buffer



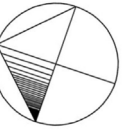
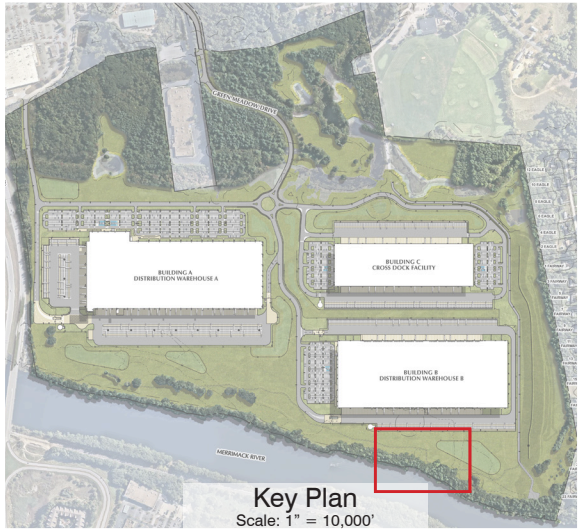
Merrimack Riverfront Buffer



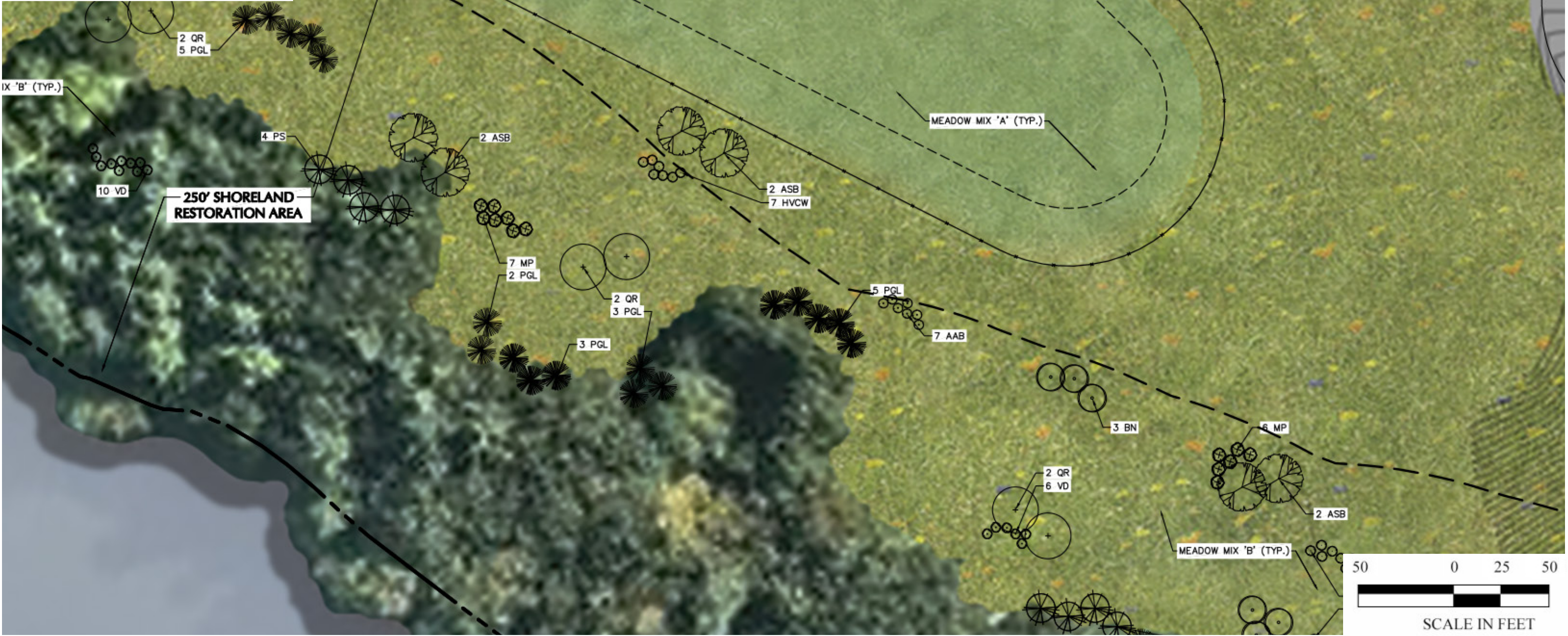
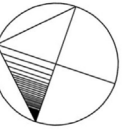
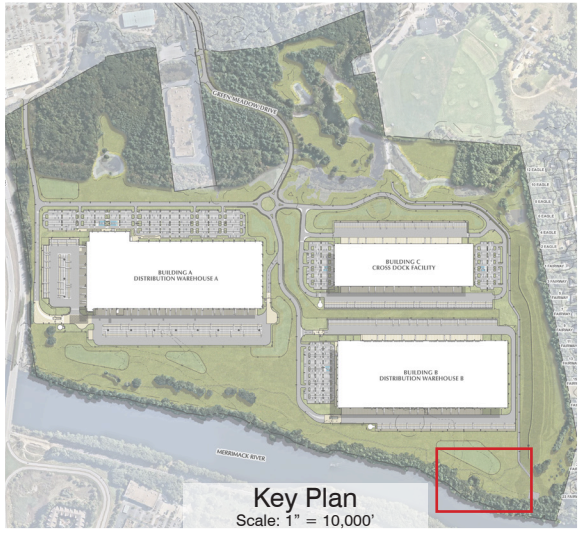
Merrimack Riverfront Buffer



Merrimack Riverfront Buffer



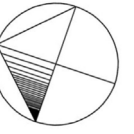
Merrimack Riverfront Buffer



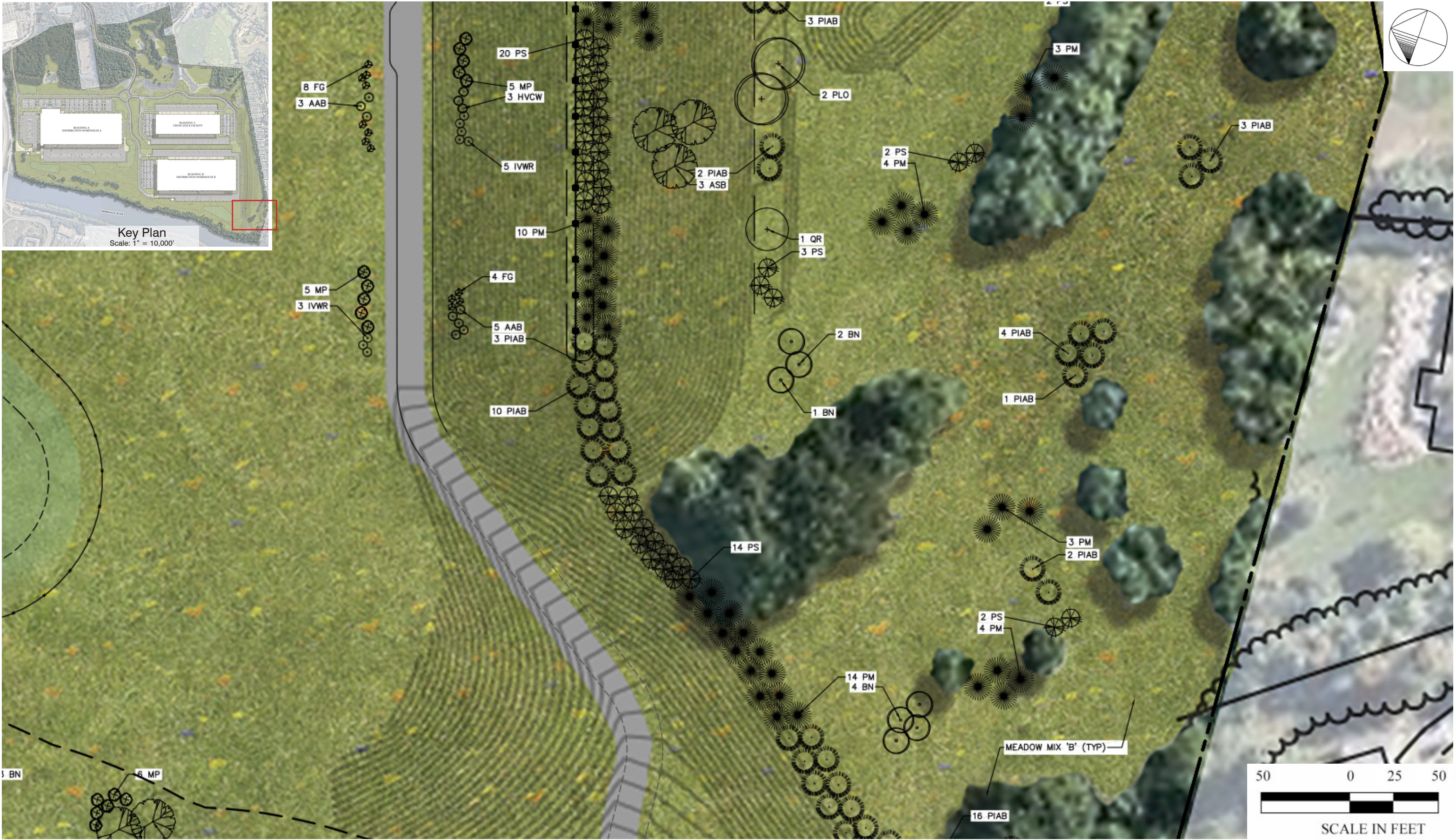
Merrimack Riverfront Buffer



Merrimack Riverfront Buffer



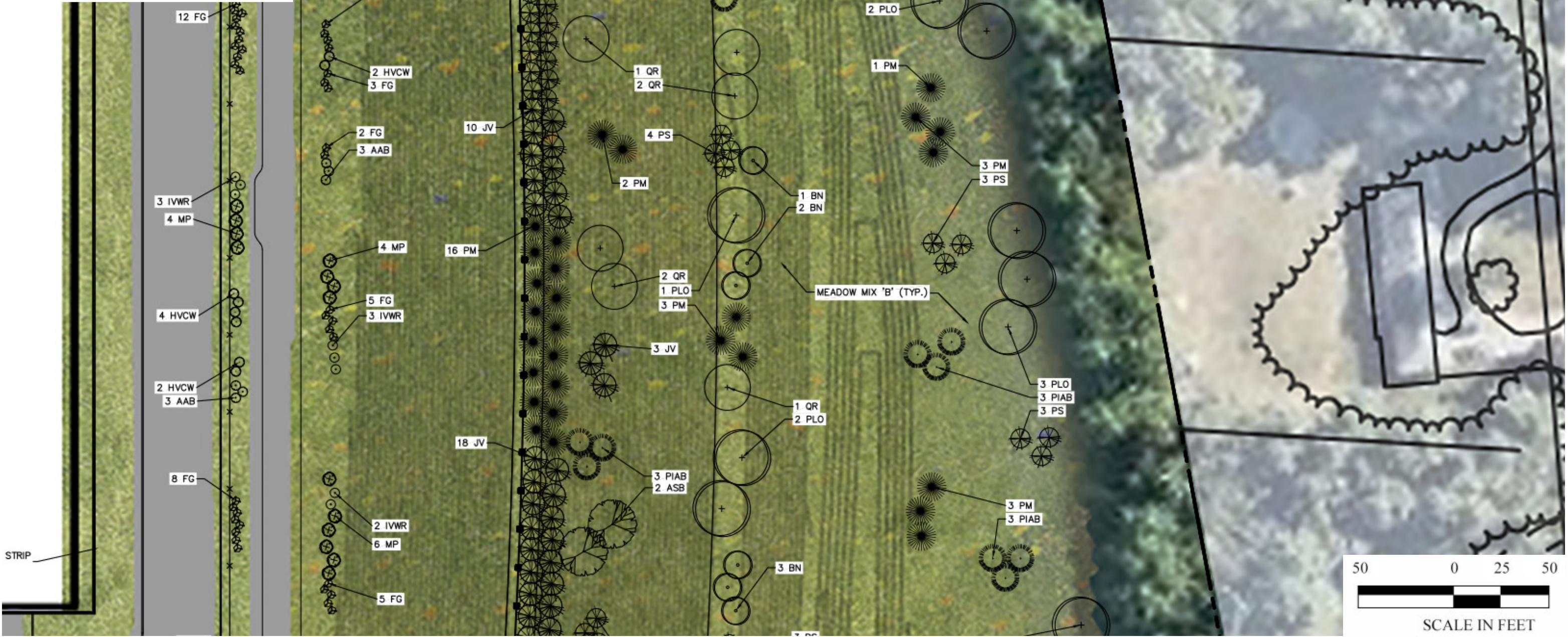
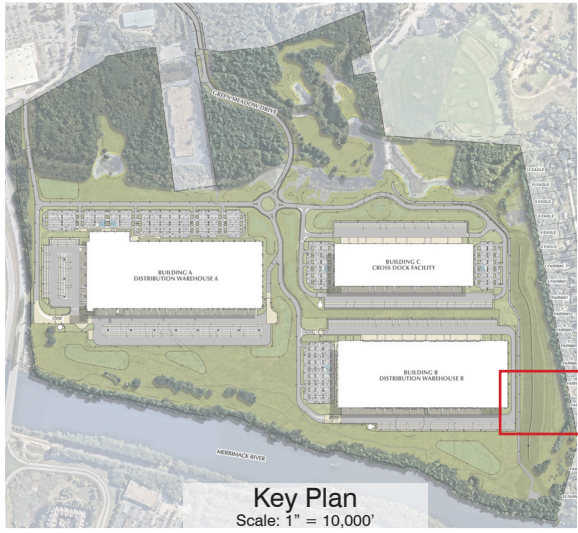
Southern Property Line Buffer



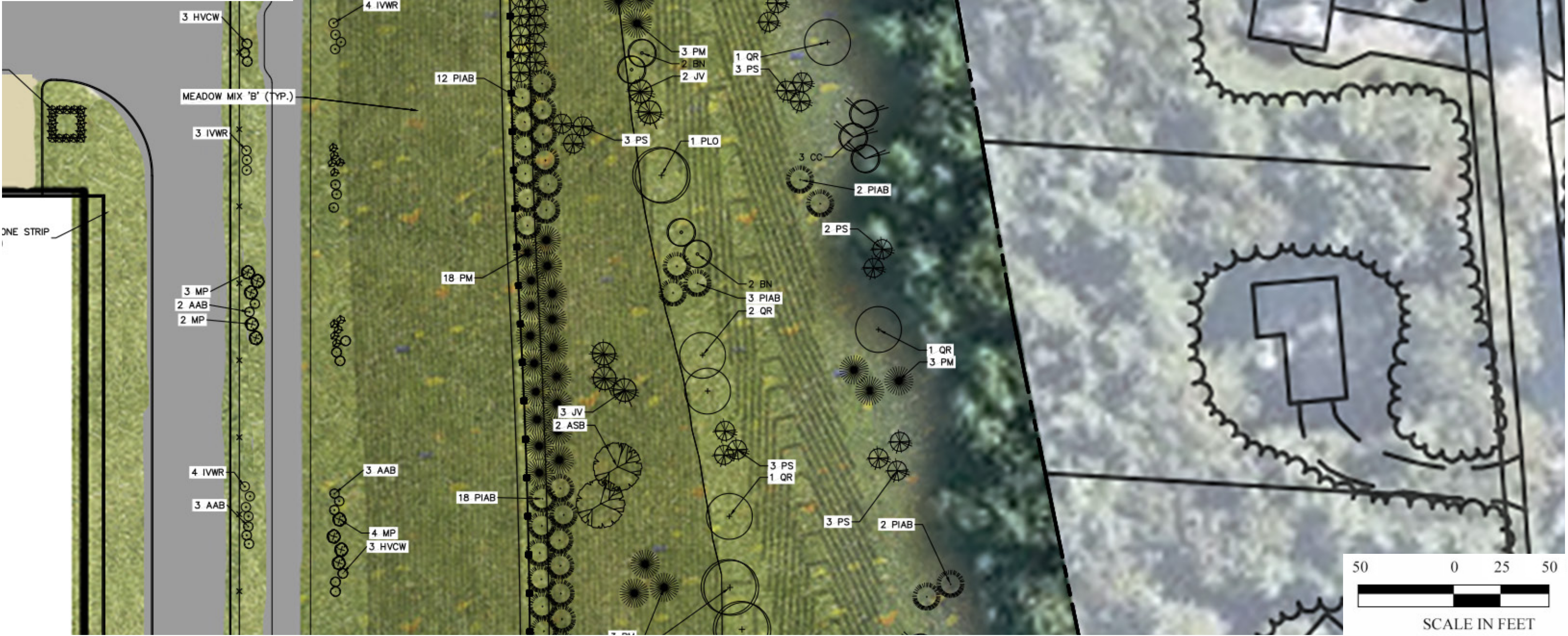
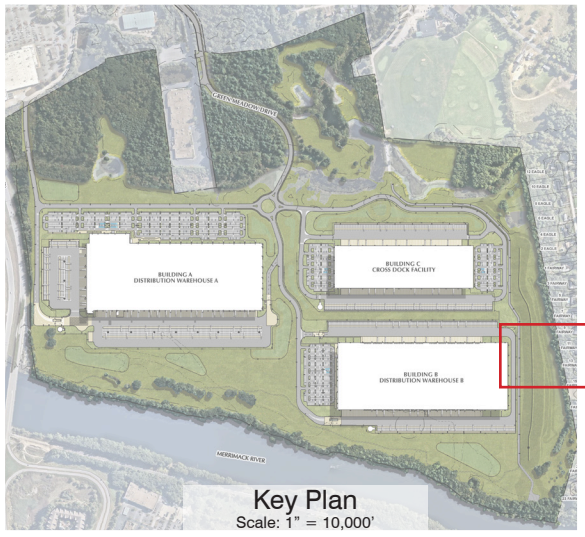
Southern Property Line Buffer



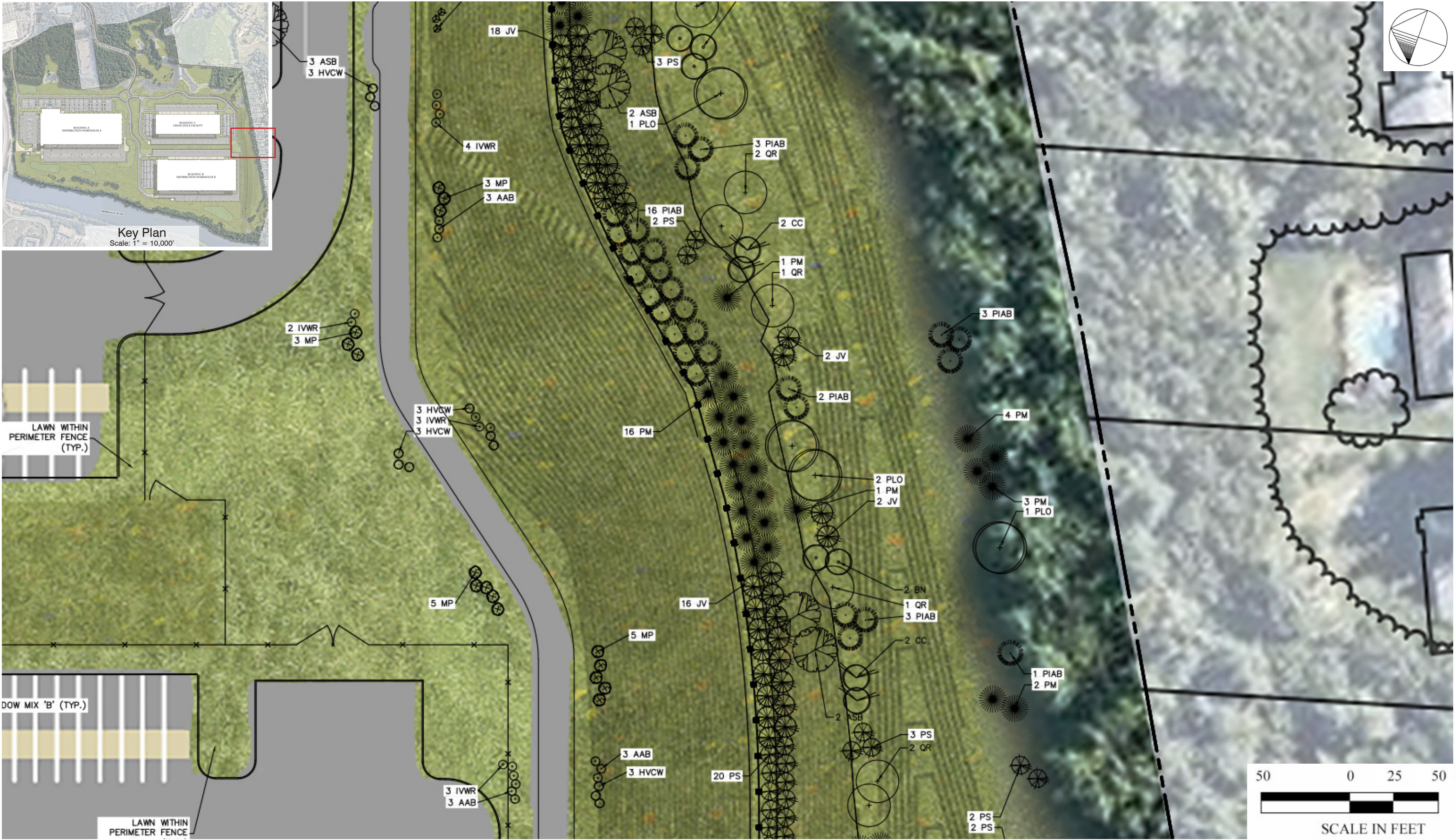
Southern Property Line Buffer



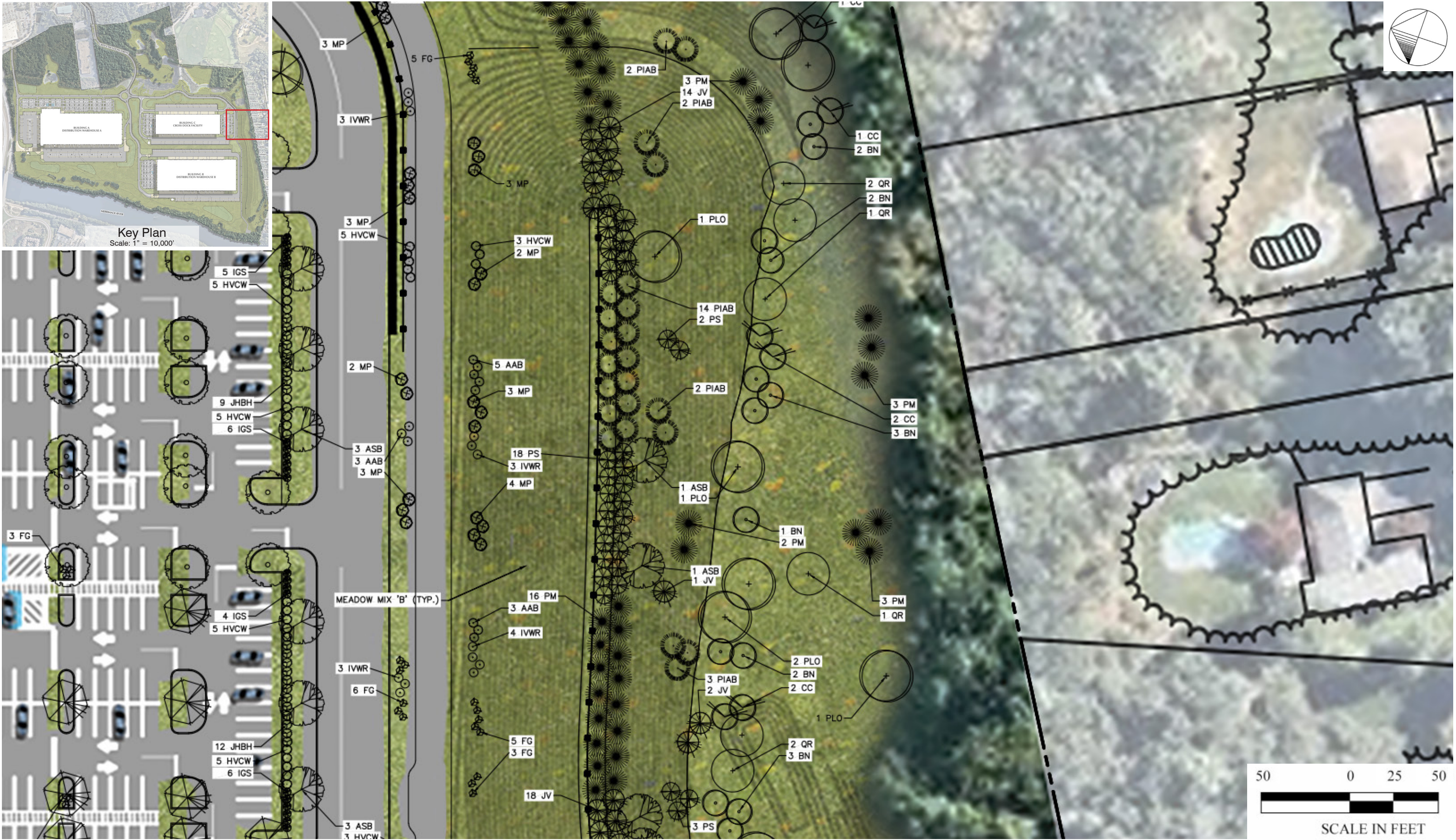
Southern Property Line Buffer



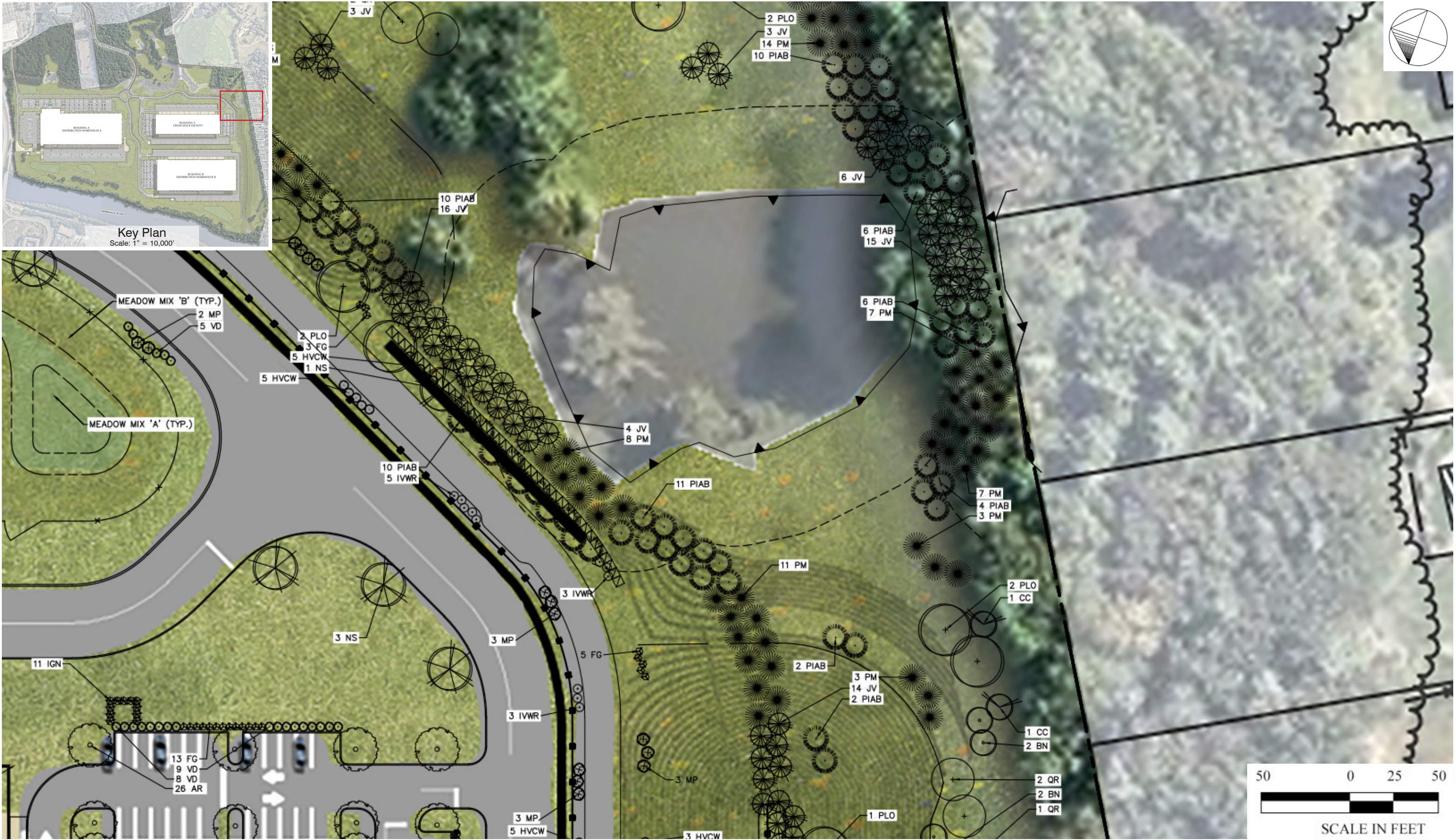
Southern Property Line Buffer



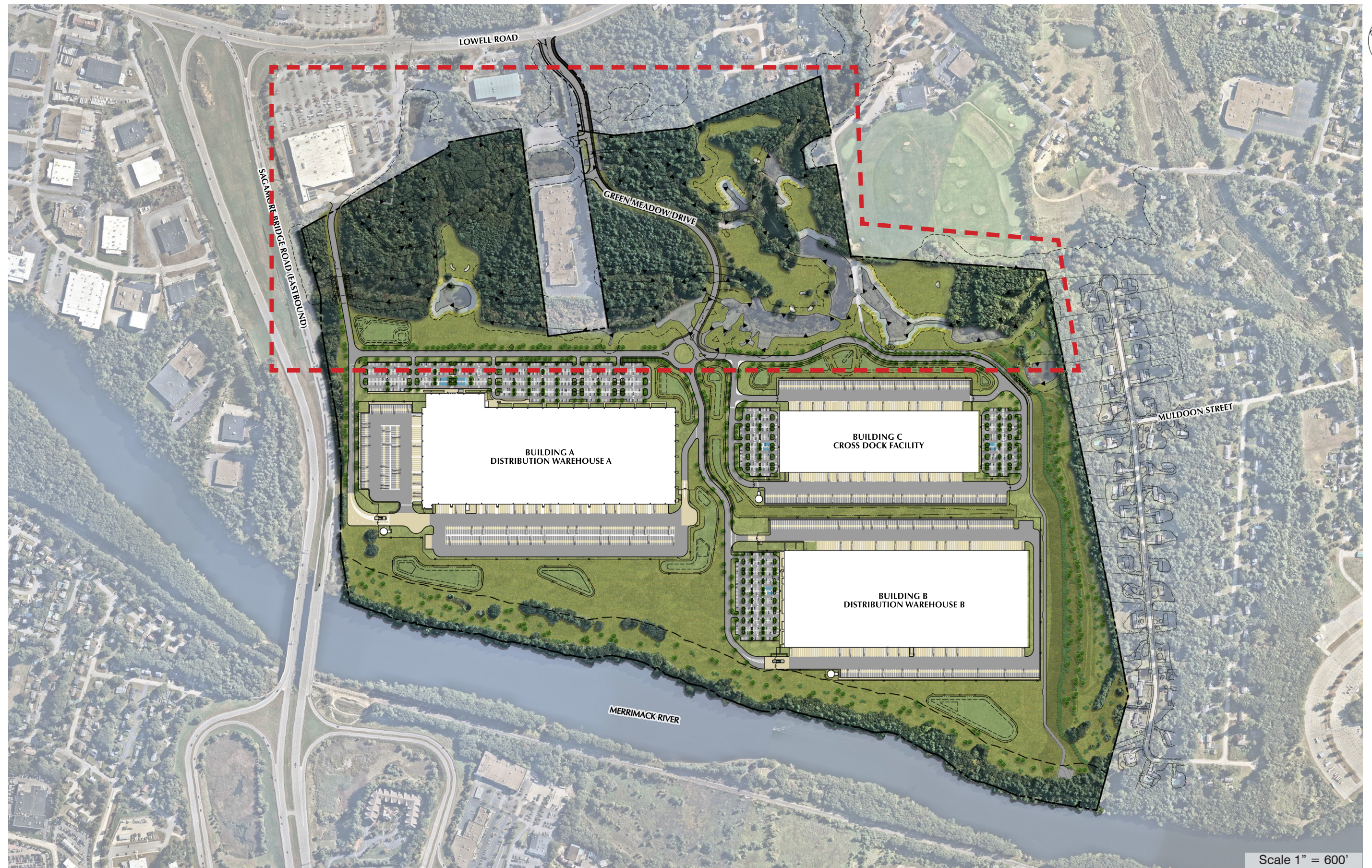
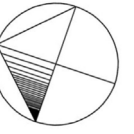
Southern Property Line Buffer



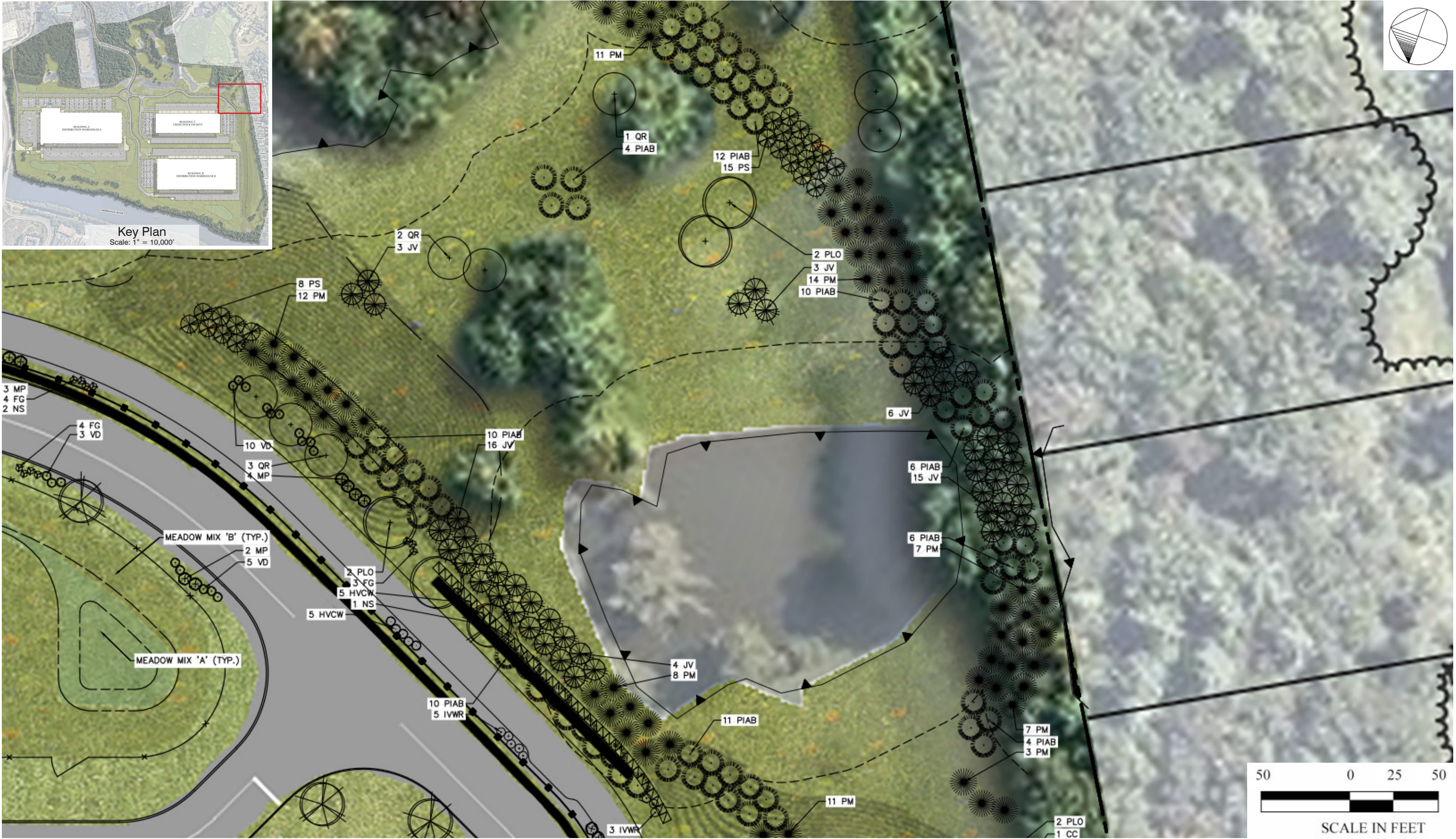
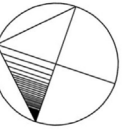
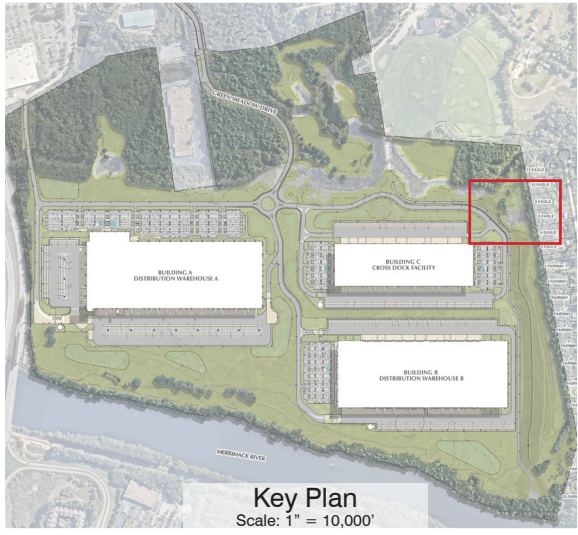
Southern Property Line Buffer



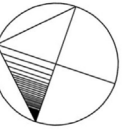
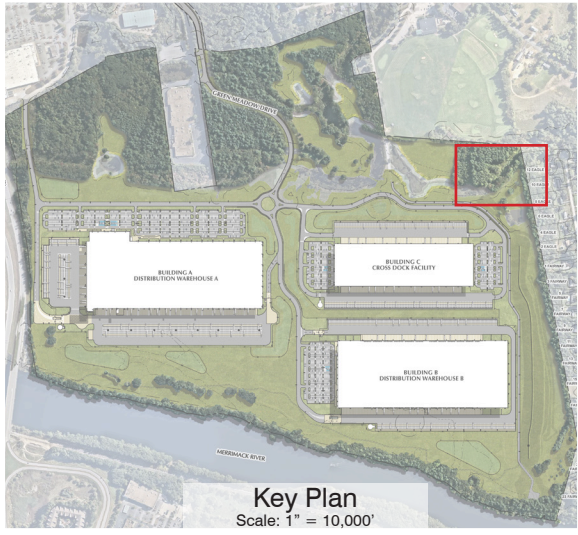
Southern Property Line Buffer



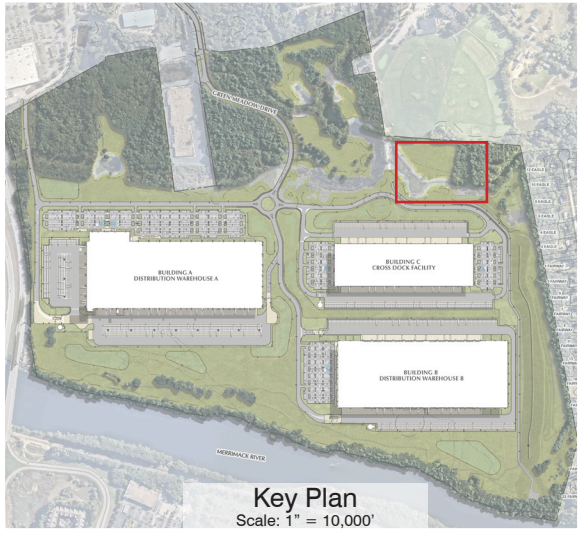
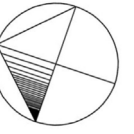
Eastern Property Line Buffer



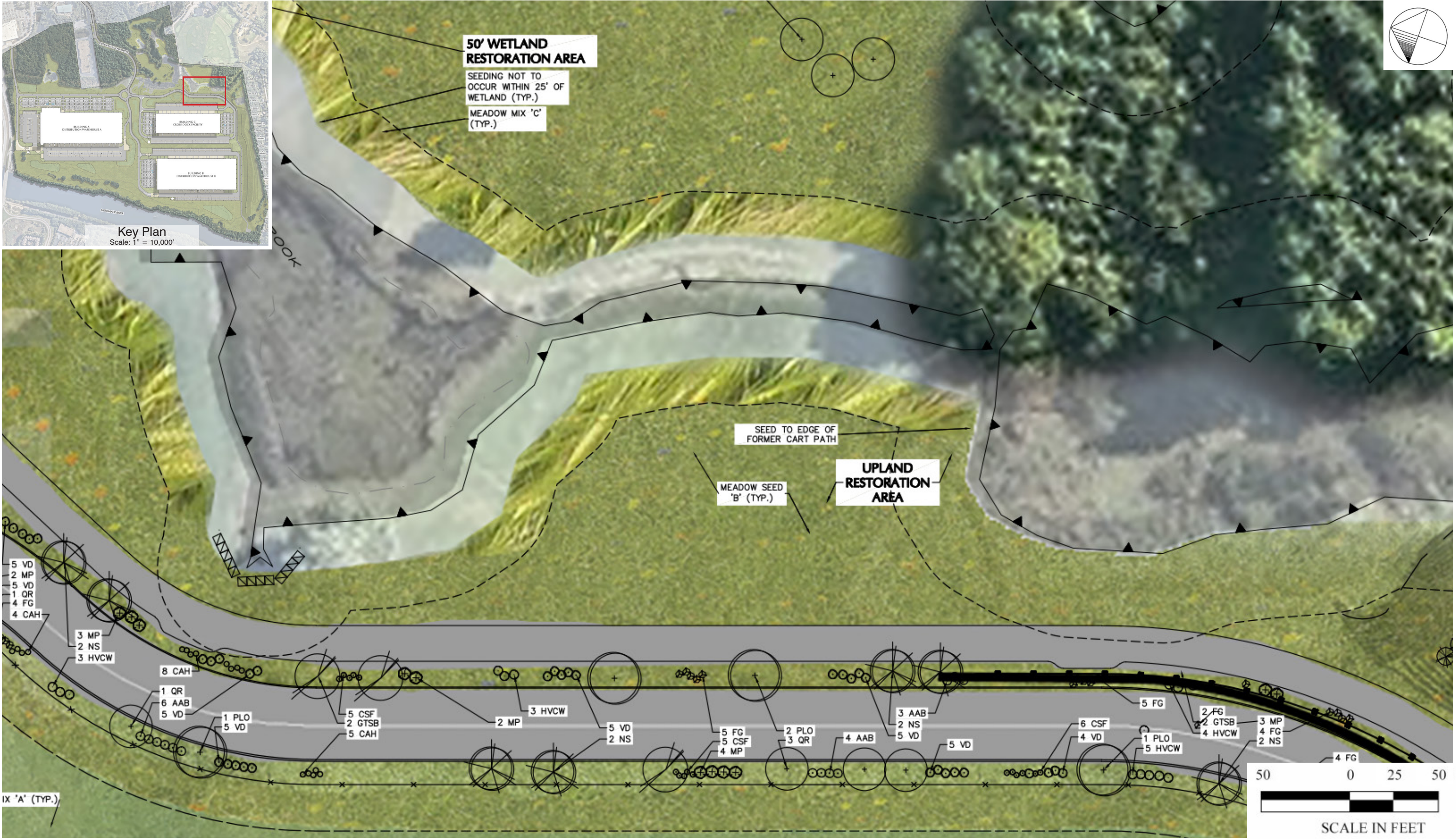
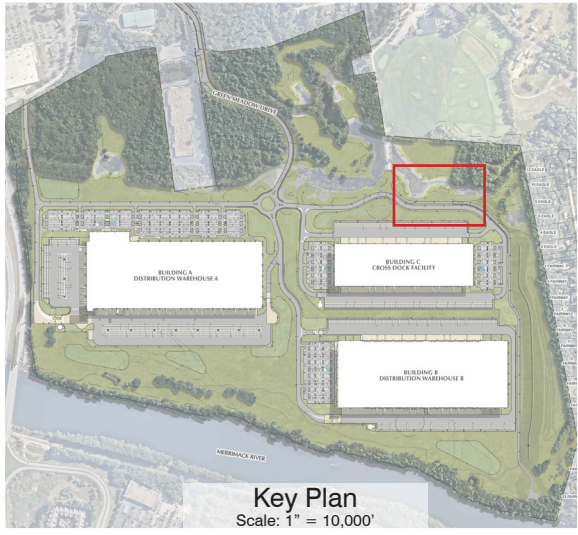
Eastern Property Line Buffer



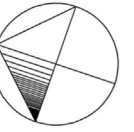
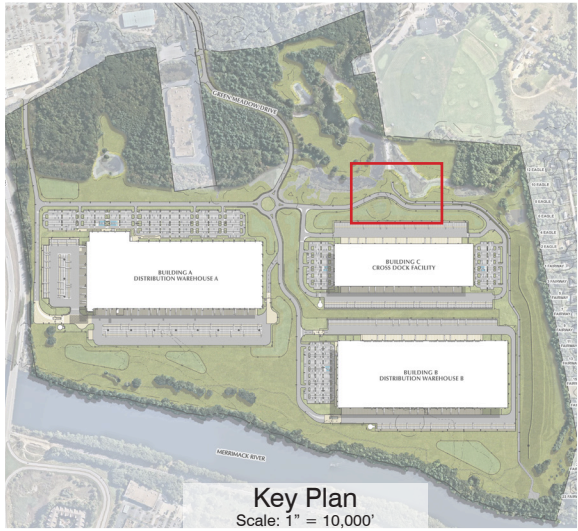
Eastern Property Line Buffer



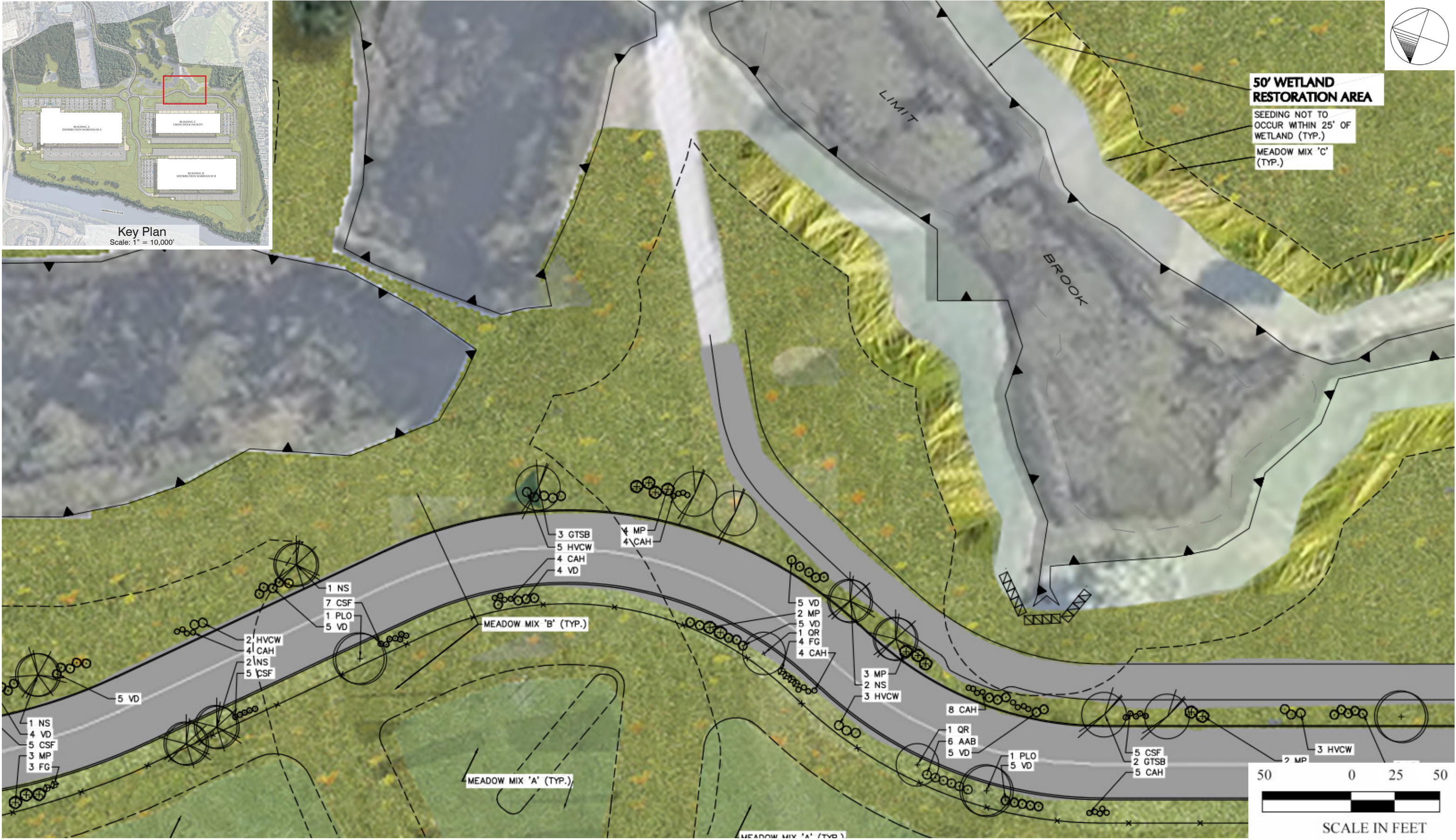
Eastern Property Line Buffer



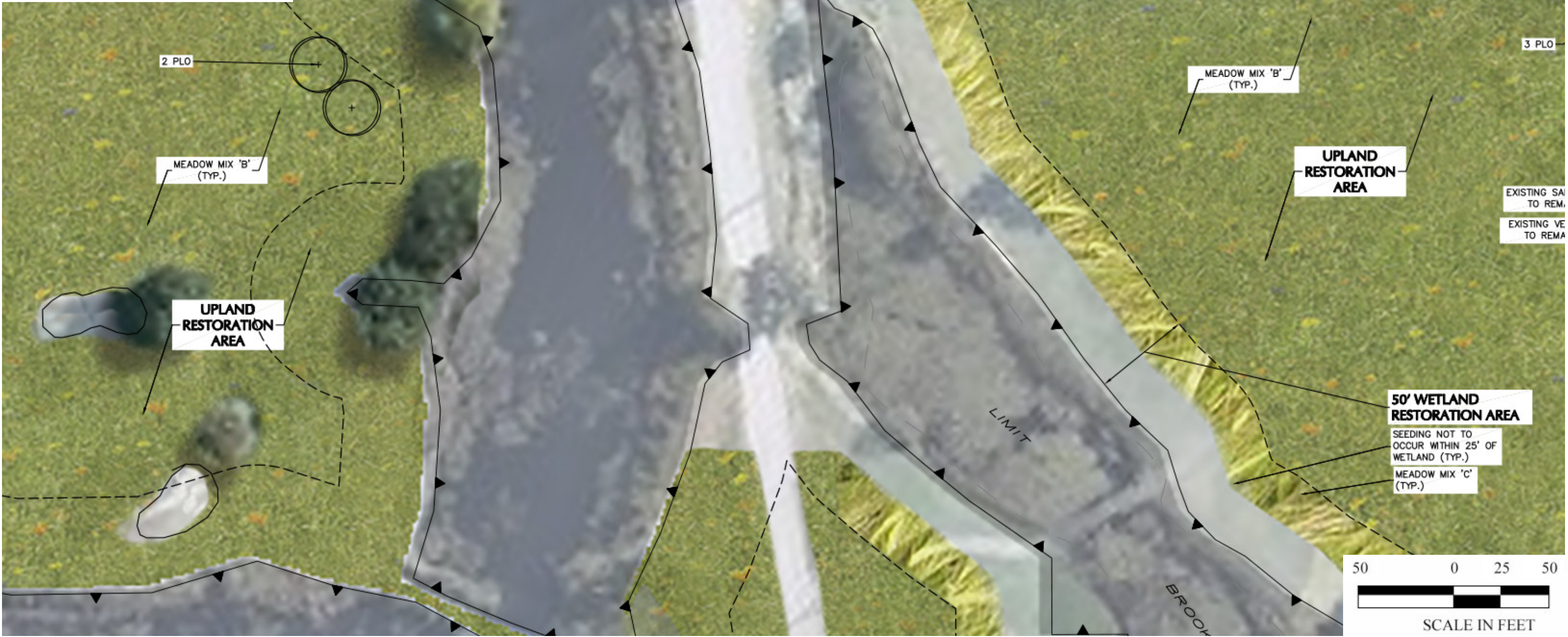
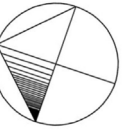
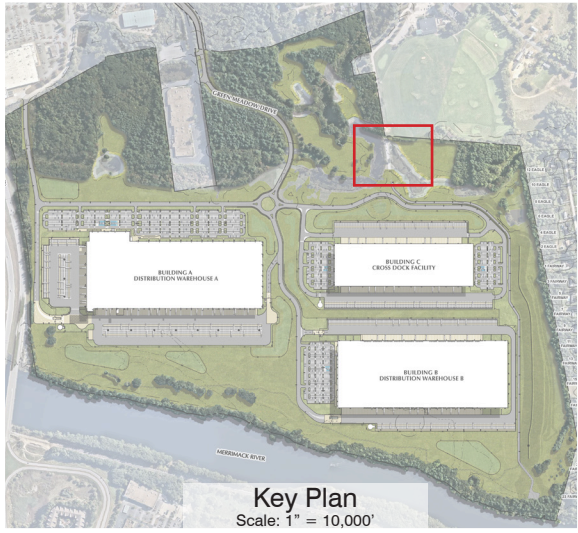
Eastern Property Line Buffer



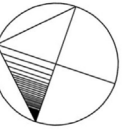
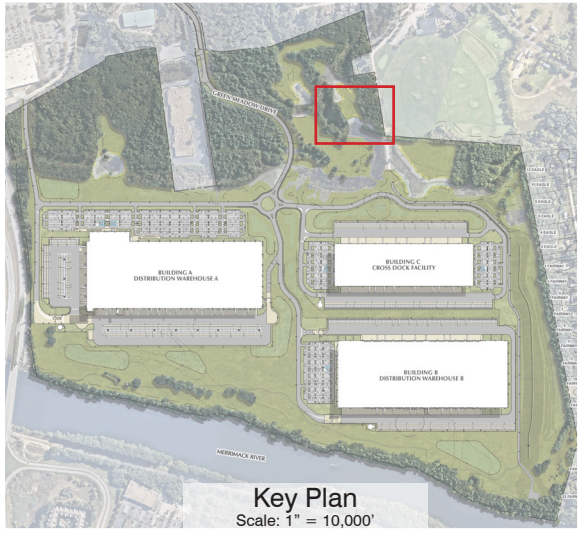
50' WETLAND RESTORATION AREA
SEEDING NOT TO OCCUR WITHIN 25' OF WETLAND (TYP.)
MEADOW MIX 'C' (TYP.)



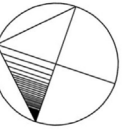
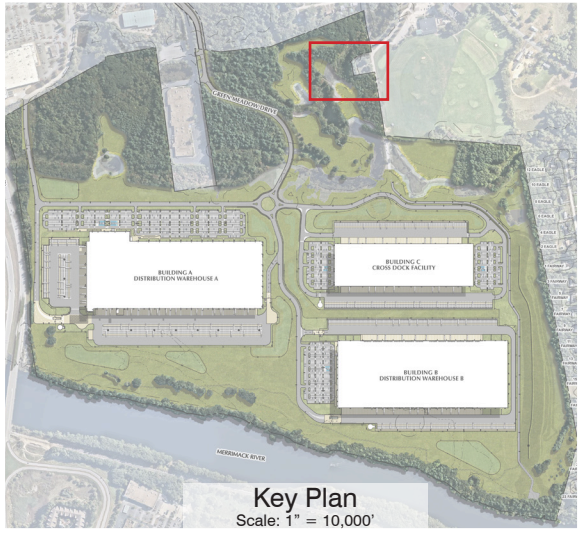
Eastern Property Line Buffer



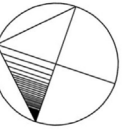
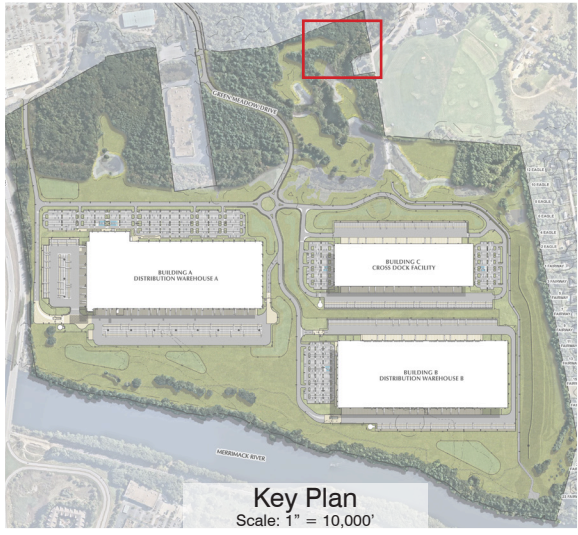
Eastern Property Line Buffer



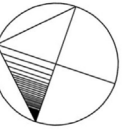
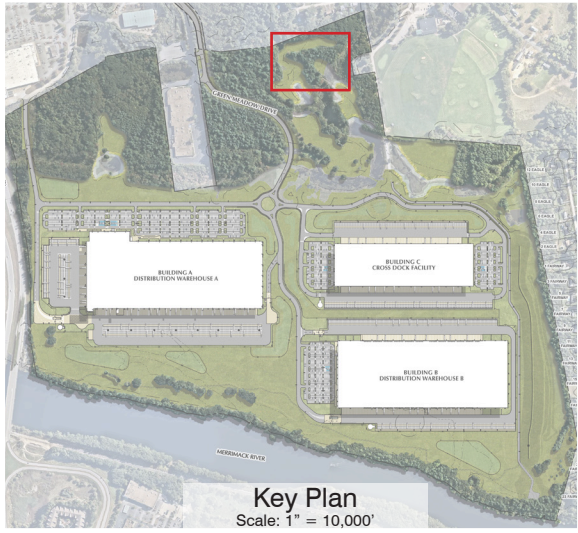
Eastern Property Line Buffer



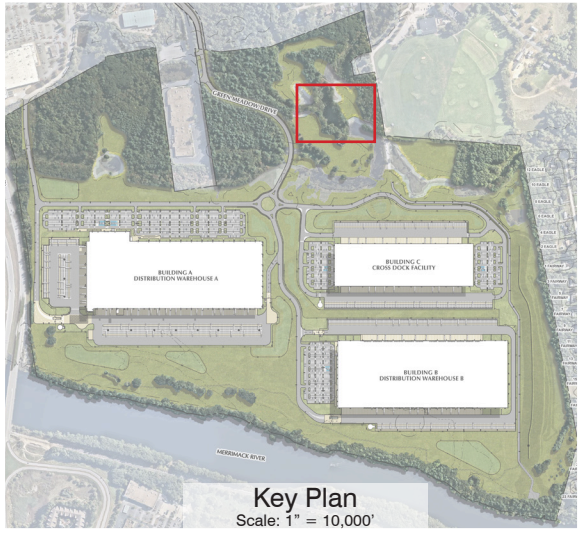
Eastern Property Line Buffer



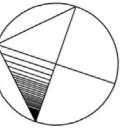
Eastern Property Line Buffer



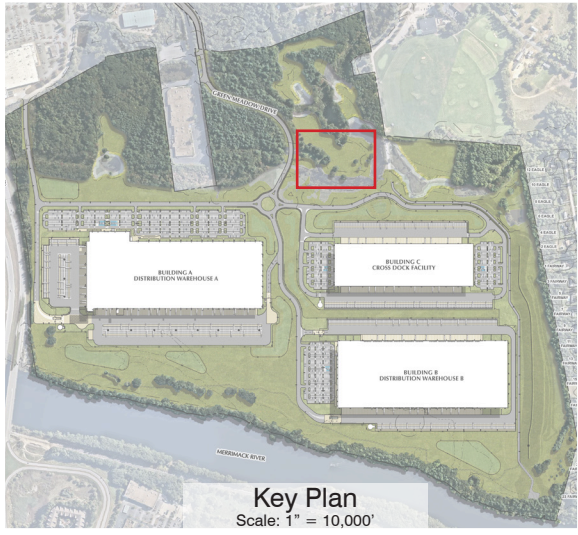
Eastern Property Line Buffer



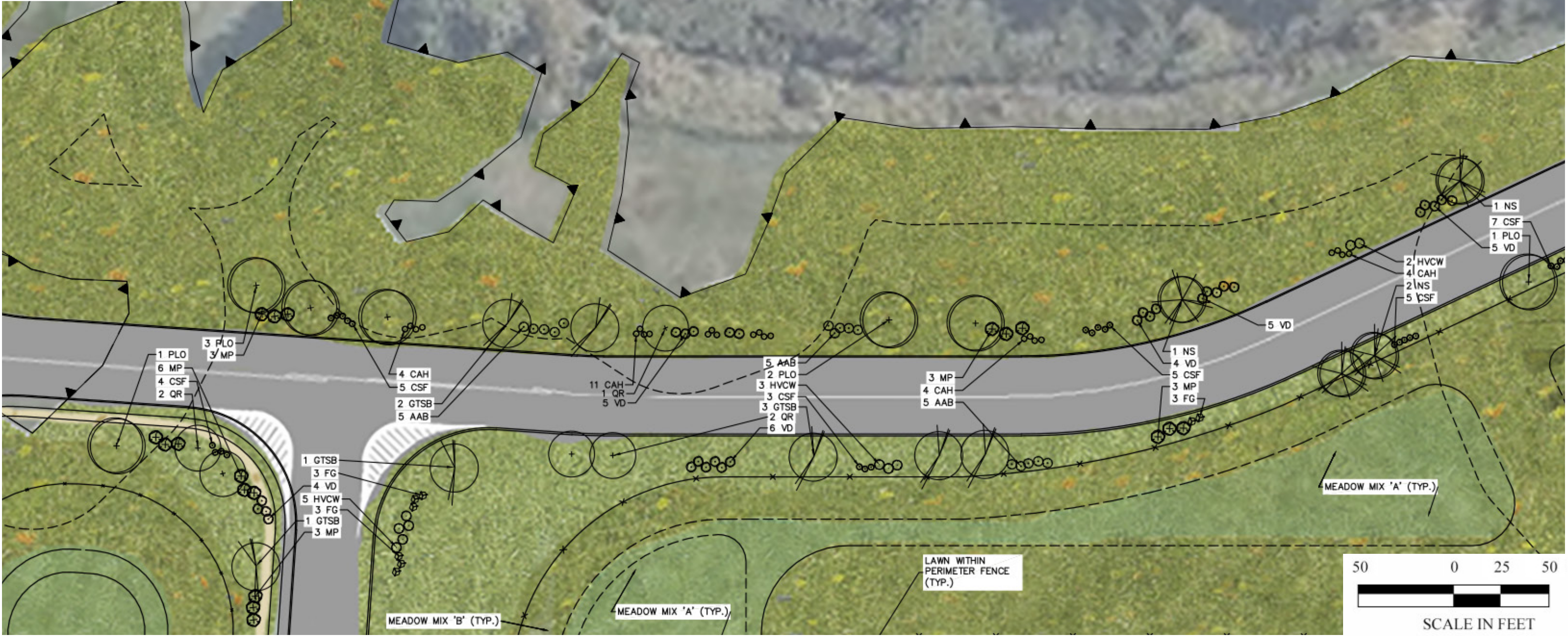
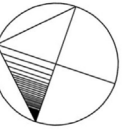
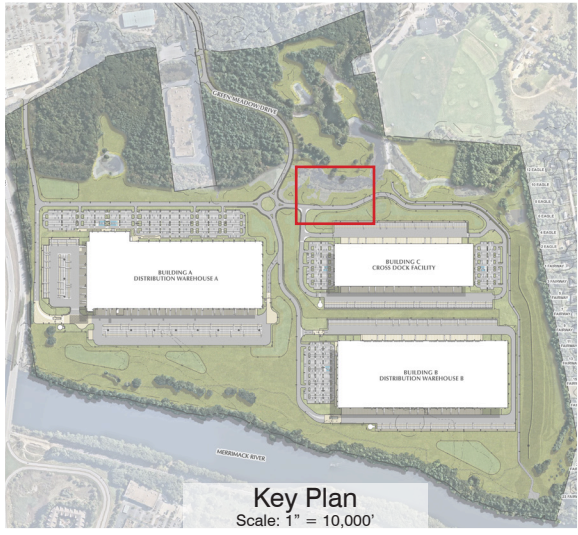
Eastern Property Line Buffer



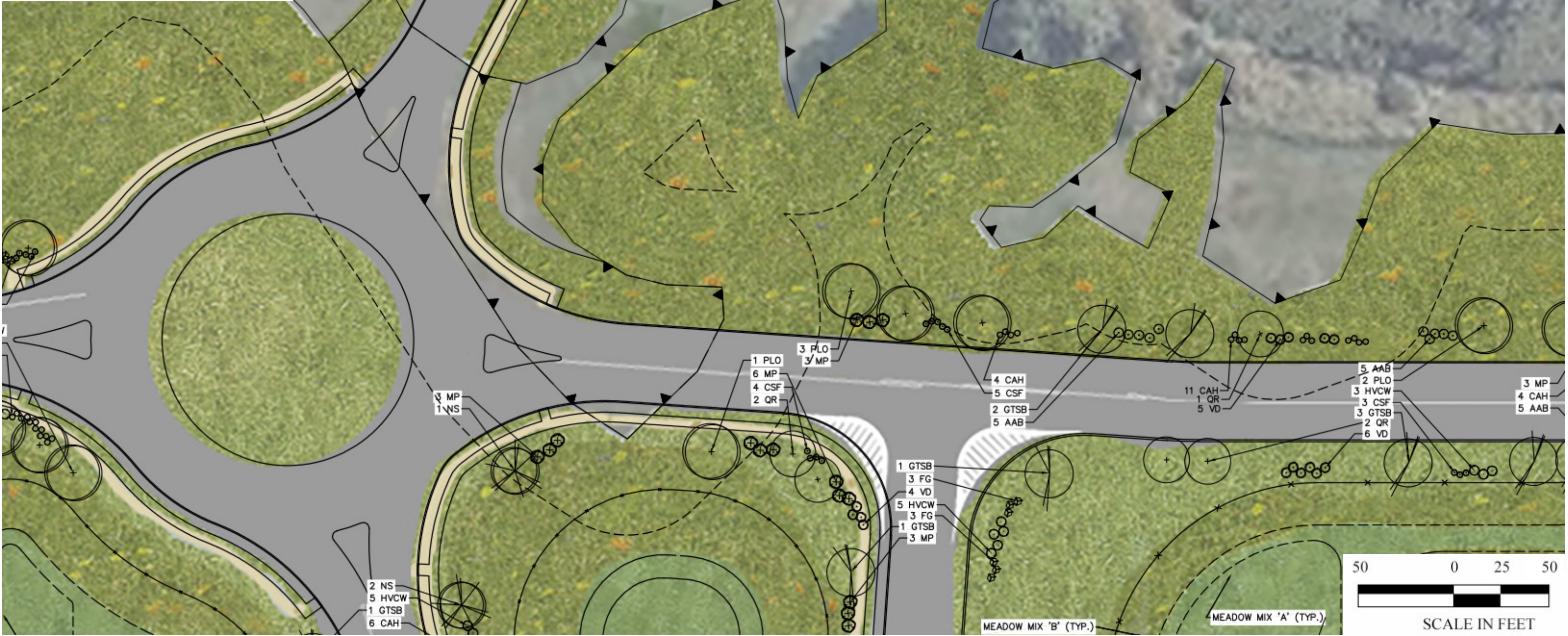
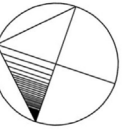
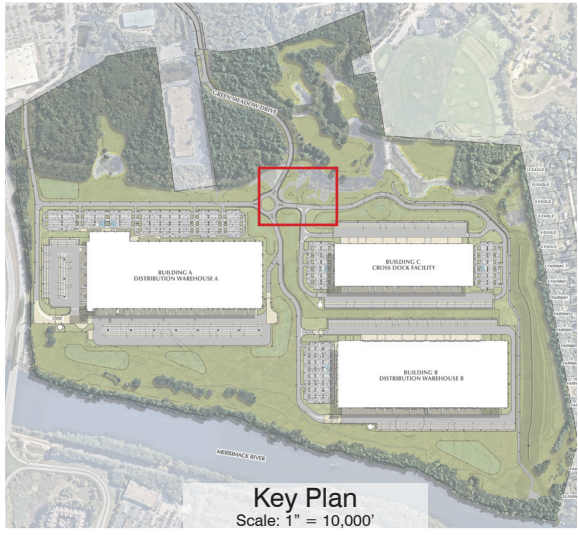
Eastern Property Line Buffer



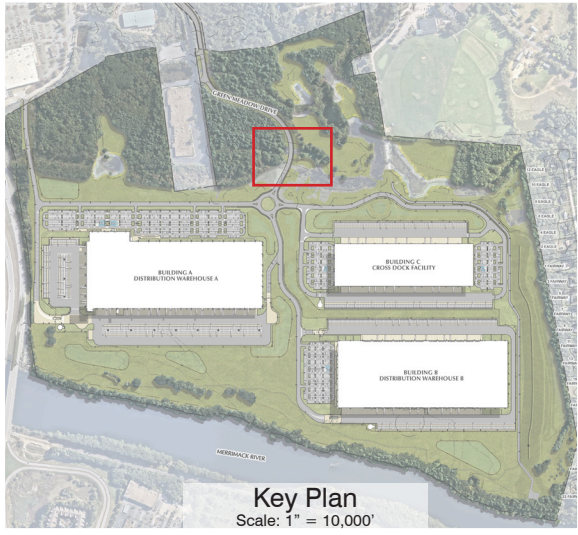
Eastern Property Line Buffer



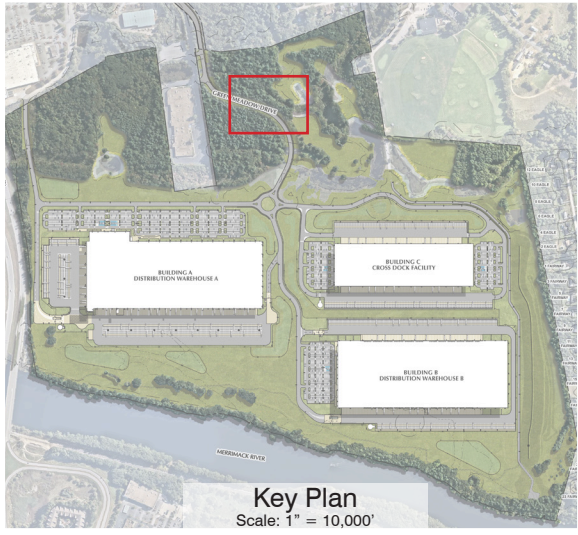
Eastern Property Line Buffer



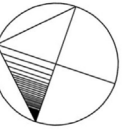
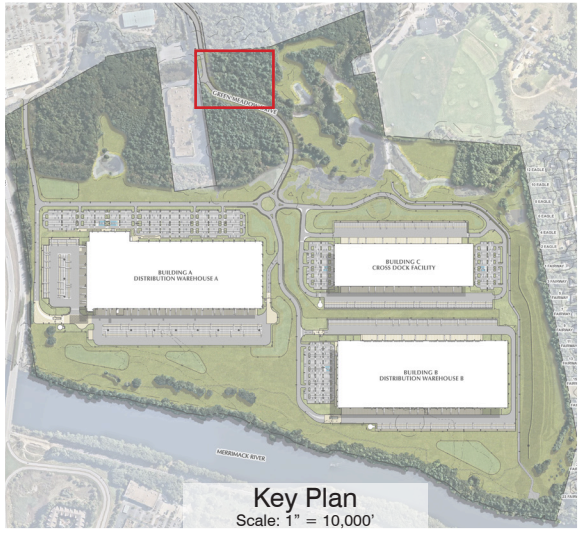
Eastern Property Line Buffer



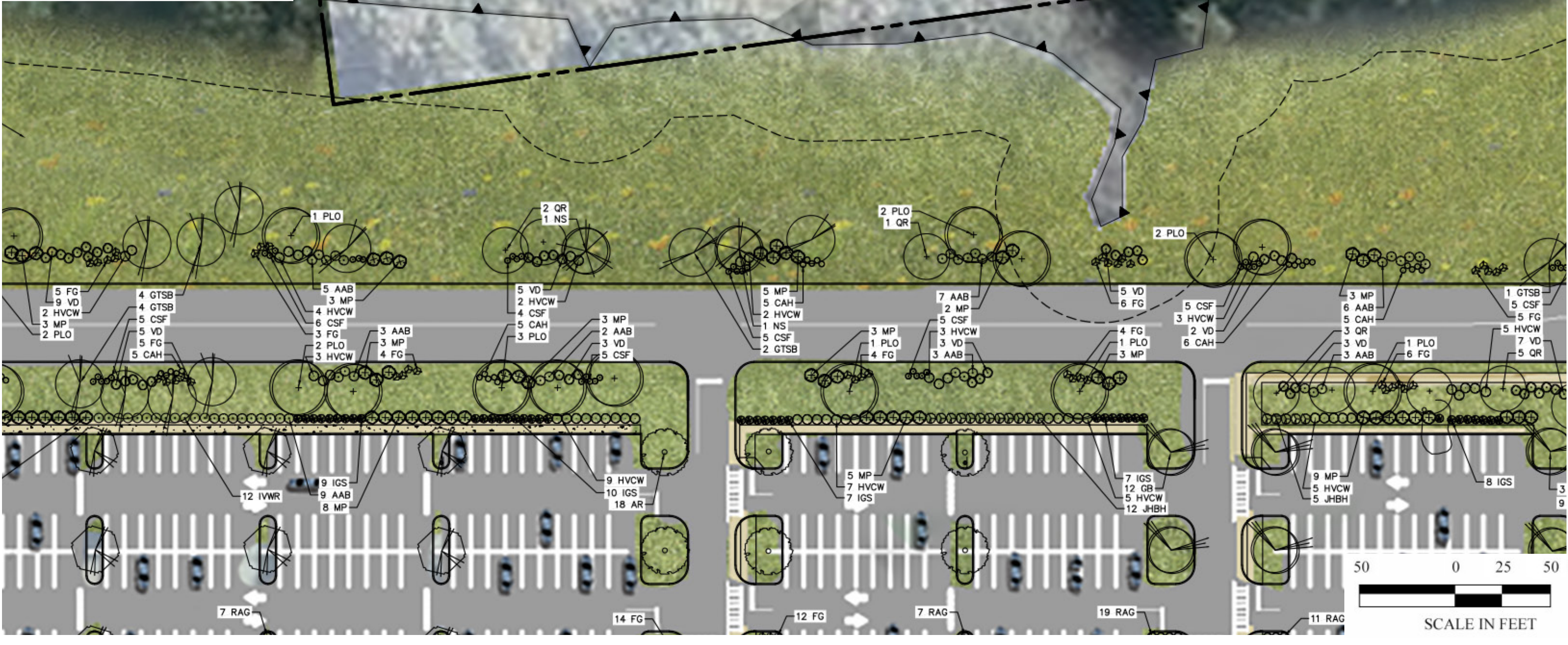
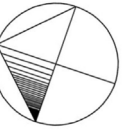
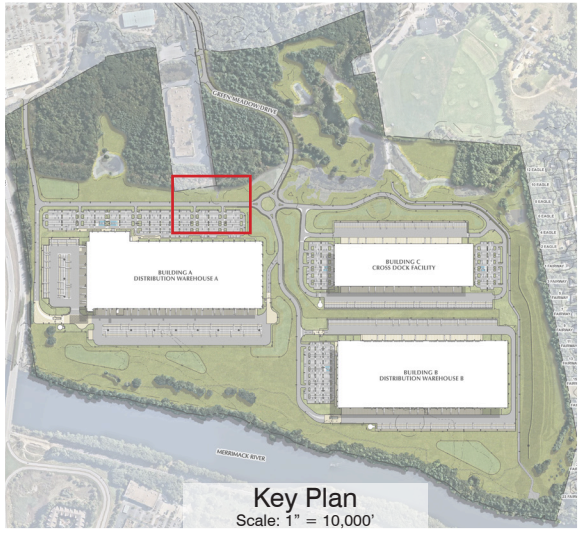
Eastern Property Line Buffer



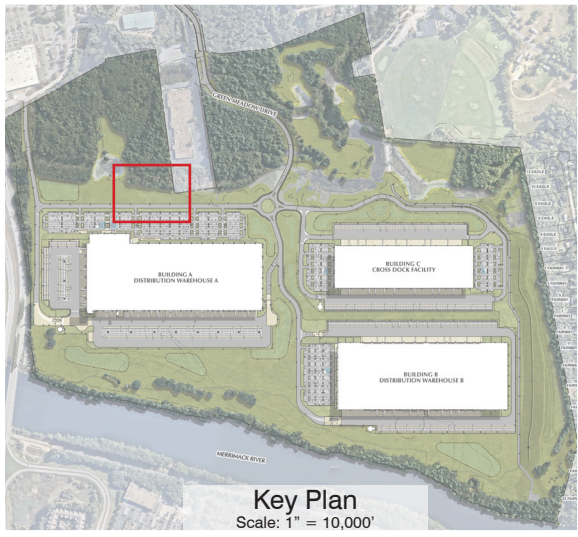
Eastern Property Line Buffer



Eastern Property Line Buffer



Eastern Property Line Buffer

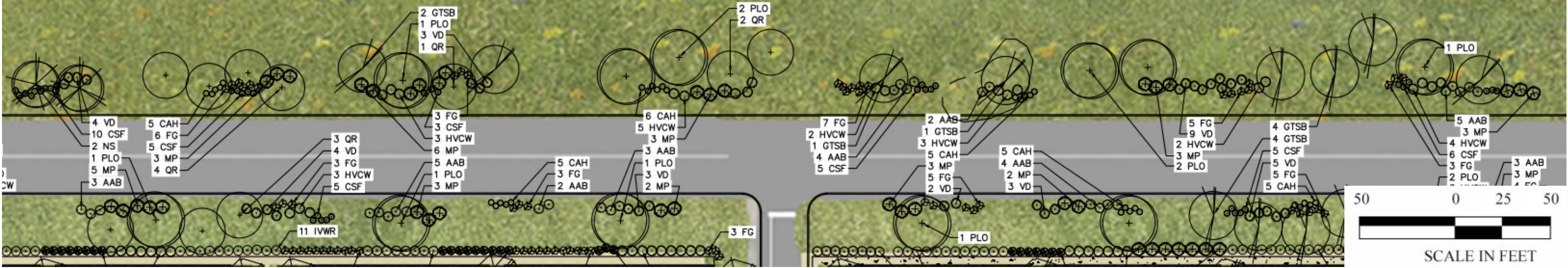


50' WETLAND RESTORATION AREA

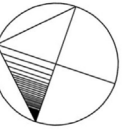
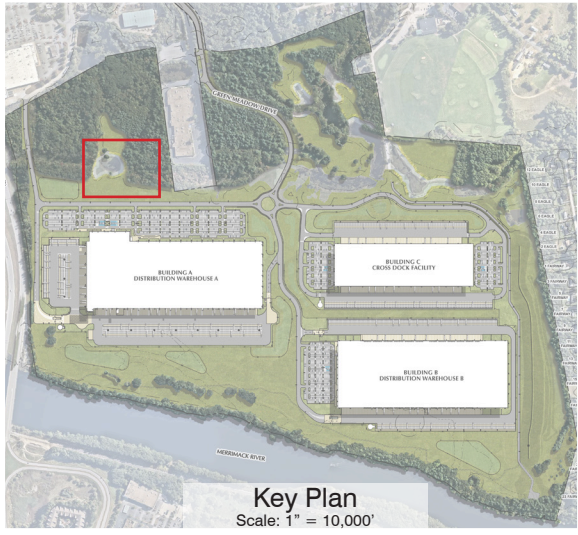
SEEDING NOT TO OCCUR WITHIN 25' OF WETLAND

MEADOW MIX 'B' (TYP.)

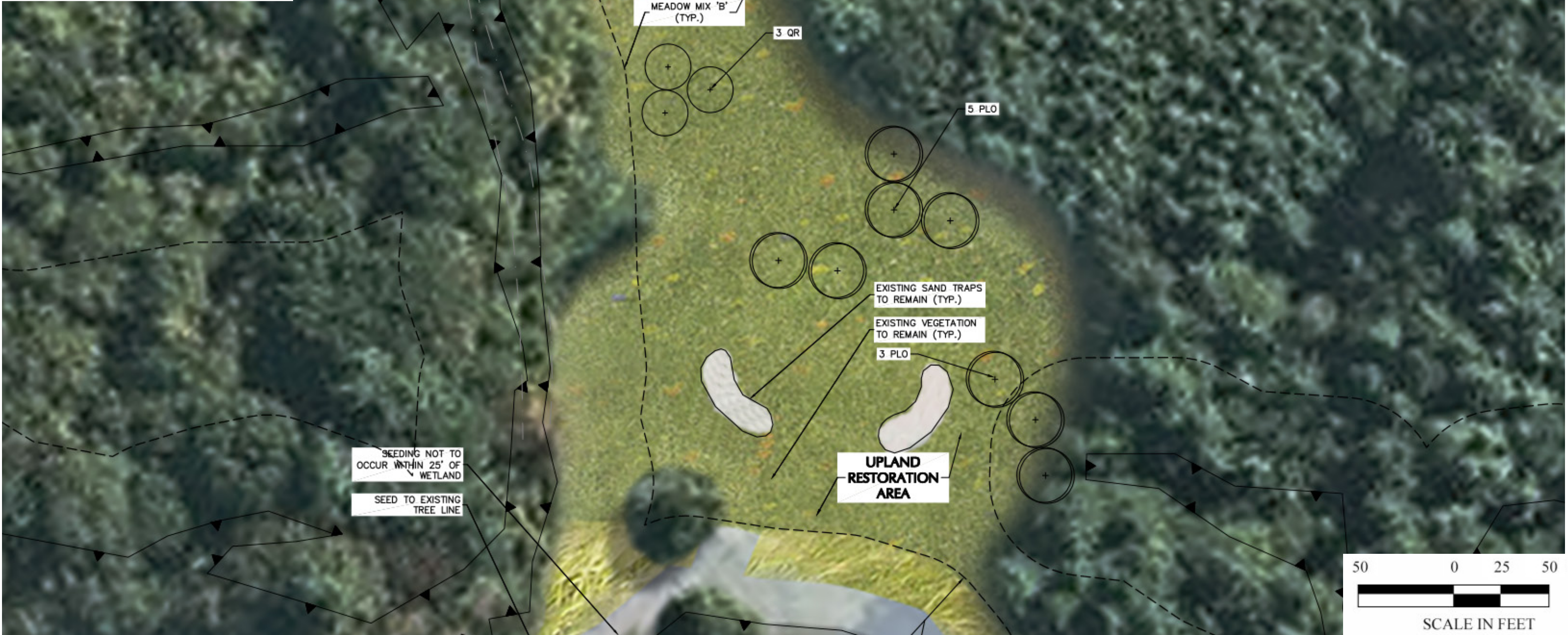
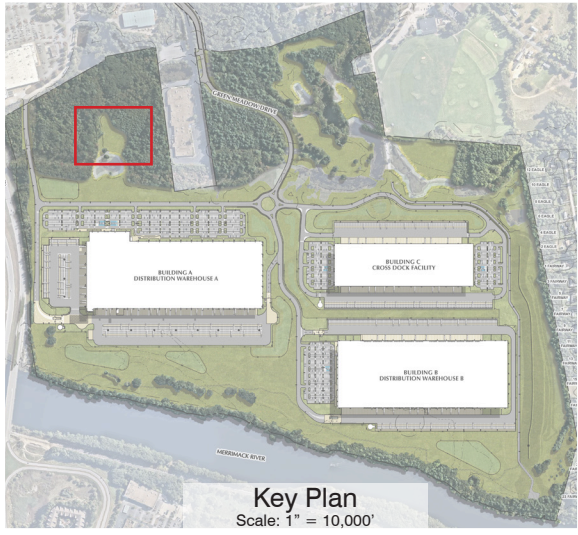
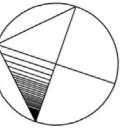
MEADOW MIX 'B' (TYP.)



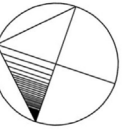
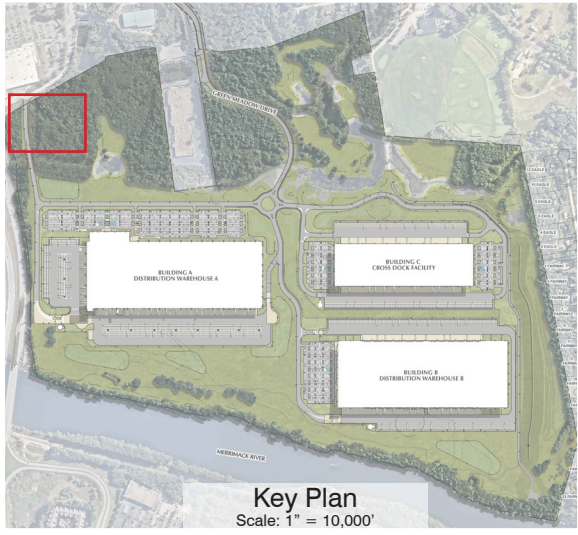
Eastern Property Line Buffer



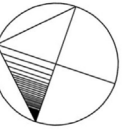
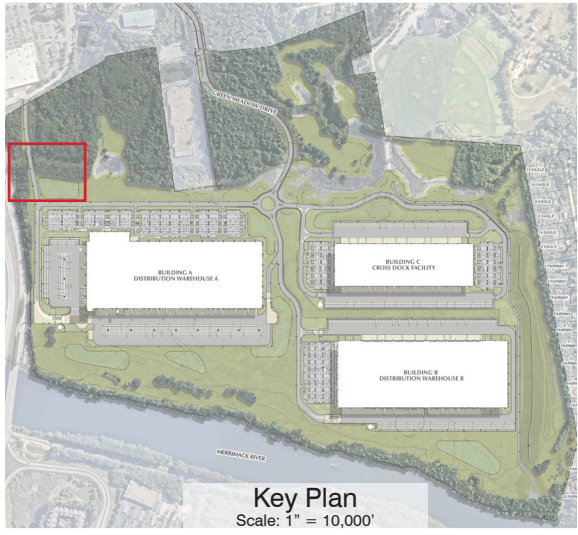
Eastern Property Line Buffer



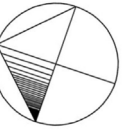
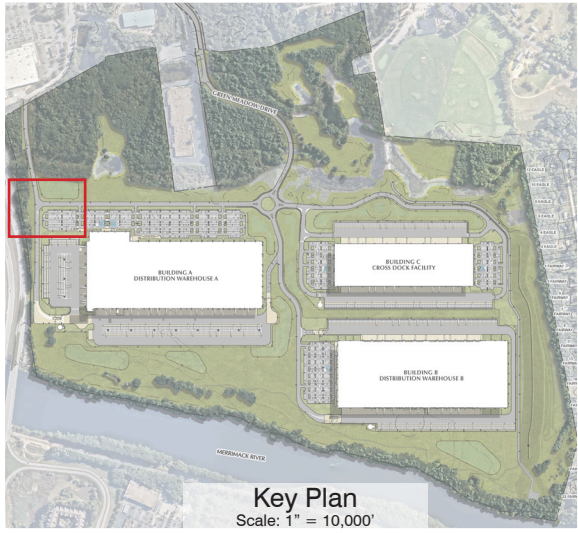
Eastern Property Line Buffer



Eastern Property Line Buffer



Eastern Property Line Buffer



Eastern Property Line Buffer

MEADOW SEED MIX A ERNST SEED MIX ERNMX-183 "NATIVE DETENTION AREA MIX"

- | | |
|---|------------------------------------|
| 32% PANICUM CLANDESTINUM, 'TIOGA' | DEERTONGUE, 'TIOGA' |
| 20% CAREX VULPINOIDEA | FOX SEDGE |
| 20% ELYMUS VIRGINICUS | VIRGINIA WILDRYE |
| 20% PANICUM VIRGATUM, 'SHAWNEE' | SWITCHGRASS, 'SHAWNEE' |
| 4% AGROSTIS PERENNANS, ALBANY PINE BUSH | AUTUMN BENTGRASS, ALBANY PINE BUSH |
| 2% JUNCUS TENUIS | PATH RUSH |
| 1% JUNCUS EFFUSUS | SOFT RUSH |
| 1% PANICUM RIGIDULUM | REDTOP PANICGRASS |

NOTES:
1. SEED AT A RATE OF 20 LBS/ACRE OF 100% PURE LIVE SEED.

MEADOW SEED MIX B - ERNMX-181 (NATIVE STEEP SLOPE MIX WITH ANNUAL RYEGRASS)

- | | |
|-----------------------------|------------------------|
| 22% SORGHASTRUM NUTANS | INDIANGRASS |
| 20% LOLIUM MULTIFLORUM | ANNUAL RYEGRASS |
| 17% SCHIZACHYRIUM SCOPARIUM | LITTLE BLUESTEM |
| 15% ELYMUS CANADENSIS | CANADA WILDRYE |
| 5% ELYMUS VIRGINICUS | VIRGINIA WILDRYE |
| 4% AGROSTIS PERENNANS | AUTUMN BENTGRASS |
| 4% AGROSTIS SCABRA | TICKLEGRASS |
| 4% TRIDENS FLAVUS | PURPLETOP |
| 2% CHAMAECRISTA FASCICULATA | PARTRIDGE PEA |
| 2% ECHINACEA PURPUREA | PURPLE CONEFLOWER |
| 1% COREOPSIS LANCEOLATA | LANCELEAF COREOPSIS |
| 1% LIATRIS SPICATA | MARSH BLAZING STAR |
| 1% MONARDA FISTULOSA | WILD BERGAMOT |
| 1% PENSTEMON DIGITALIS | TALL WHITE BEARDTONGUE |
| 1% RUDBECKIA HIRTA | BLACKEYED SUSAN |

NOTES:
SEED AT A RATE OF 60 LBS/ACRE OF 100% PURE LIVE SEED.

**MEADOW SEED MIX C - NEW ENGLAND WETLAND PLANTS, INC.
(NEW ENGLAND EROSION CONTROL/RESTORATION MIX FOR DETENTION BASINS AND MOIST SITES)**

- | | |
|--------------------------|--|
| RIVERBANK WILD RYE | ELYMUS RIPARIUS |
| CREeping RED FESCUE | FESTUCA RUBRA |
| LITTLE BLUESTEM | SCHIZACHYRIUM SCOPARIUM |
| BIG BLUESTEM | ANDROPOGON GERARDII |
| SWITCH GRASS | PANICUM VIRGATUM |
| UPLAND BENTGRASS | AGROSTIS PERENNANS |
| NODDING BUR MARIGOLD | BIDENS CERNUA |
| HOLLOW-STEM JOE PYE WEED | EUPATORIUM FISTULOSUM/EUTROCHUM FISTULOSUM |
| NEW ENGLAND ASTER | ASTER NOVAE-ANGLIAE |
| BONESET | EUPATORIUM PERFOLIATUM |
| BLUE VERVAIN | VERBENA HASTATA |
| SOFT RUSH | JUNCUS EFFUSUS |
| WOOL GRASS | SCIRPUS CYPERINUS |

NOTES:
SEED AT A RATE OF 35 LBS/ACRE OF 100% PURE LIVE SEED.



Meadow Mix A
Native Detention Area Mix:



Meadow Mix B
Native Steep Slope Mix



Meadow Mix C
New England Wetland Area Mix

Meadow Mix Planting Palette

PLANT SCHEDULE						
KEY	QTY.	BOTANICAL NAME	COMMON NAME	SIZE	ROOT	REMARKS
SHADE TREE(S)						
AR	44	ACER RUBRUM	RED MAPLE	2 1/2-3" CAL.	B+B	-
ASB	123	ACER SACCHARUM BONFIRE	BONFIRE SUGAR MAPLE	2 1/2-3" CAL.	B+B	-
GB	59	GINKGO BILOBA	MAIDENHAIR TREE GINKO	2 1/2-3" CAL.	B+B	-
GTSB	59	GLEDITSIA TRIACANTHOS INERMIS 'SUNBURST'	SUNBURST HONEY LOCUST	2 1/2-3" CAL.	B+B	-
LST	44	LIQUIDAMBAR STYRACIFLUA	AMERICAN SWEETGUM	2 1/2-3" CAL.	B+B	-
NS	51	NYSSA SYLVATICA	SOURGUM OR TUPELO	2 1/2-3" CAL.	B+B	-
PLO	114	PLATANUS OCCIDENTALIS	AMERICAN SYCAMORE	2 1/2-3" CAL.	B+B	-
QR	181	QUERCUS RUBRA	RED OAK	2 1/2-3" CAL.	B+B	-
TCG	62	TILIA CORDATA 'GREENSPIRE'	GREENSPIRE LINDEN	2 1/2-3" CAL.	B+B	-
UNDERSTORY TREE(S)						
BN	123	BETULA NIGRA	MULTI STEM RIVER BIRCH	12-14'	B+B	-
CC	18	CERCIS CANADENSIS	EASTERN REDBUD	2-2 1/2" CAL.	B+B	-
EVERGREEN TREE(S)						
JV	143	JUNIPERUS VIRGINIANA	EASTERN RED CEDAR	8-10'	B+B	-
PGL	119	PICEA GLAUCA	WHITE SPRUCE	6-7'	B+B	-
PIAB	252	PICEA ABIES	NORWAY SPRUCE	6-7'	B+B	-
PM	259	PSEUDOTSUGA MENZIESII	DOUGLAS FIR	6-7'	B+B	-
PS	247	PINUS STROBUS	EASTERN WHITE PINE	6-7'	B+B	-
EVERGREEN SHRUB(S)						
IGN	131	ILEX GLABRA 'NIGRA'	NIGRA INKBERRY	30-36"	#5 CAN	-
IGS	105	ILEX GLABRA 'SHAMROCK'	SHAMROCK INKBERRY HOLLY	24-30"	#5 CAN	-
JHBH	85	JUNIPERUS HORIZONTALIS 'BAR HARBOR'	BAR HARBOR CREEPING JUNIPER	15-18" SPRD.	#3 CAN	-
MP	433	MYRICA PENNSYLVANICA	NORTHERN BAYBERRY	30-36"	B+B	-
DECIDUOUS SHRUB(S)						
AAB	349	ARONIA ARBUTIFOLIA 'BRILLIANTISSIMA'	RED CHOKEBERRY	3-4'	B+B	-
CAH	611	CLETHRA ALNIFOLIA 'HUMMINGBIRD'	SWEET PEPPERBUSH	18-24"	CONTAINER	-
CS	353	CORNUS SERICEA (FORMERLY STOLONIFERA)	RED OSIER DOGWOOD	2-3'	B+B	-
CSF	289	CORNUS SERICEA 'FLAVIRAMEA'	YELLOW TWIG DOGWOOD	2-3'	B+B	-
FG	490	FOTHERGILLA GARDENII	DWARF FOTHERGILLA	18-24"	#3 CAN	-
HVCW	349	HAMAMELIS VIRGINIANA	COMMON WITCHHAZEL	3-4'	B+B	-
IVWR	114	ILEX VERTICILLATA 'WINTER RED'	WINTER RED WINTERBERRY HOLLY	30-36"	#5 CAN	-
RAG	263	RHUS AROMATICA 'GRO LOW'	GRO LOW FRAGRANT SUMAC	3 GAL.	CONTAINER	-
VD	407	VIBURNUM DENTATUM	ARROWWOOD VIBURNUM	3-4'	B+B	-
GROUND COVER						
BPA	1204	BAPTISIA AUSTRALIS	BLUE FALSE INDIGO	2 GAL.	CONTAINER	spaced @ 24" o.c.
ORNAMENTAL GRASS(ES)						
BGBA	2129	BOUTELOUA GRACILIS 'BLONE AMBITION'	BLUE GRAMA GRASS	2 GAL.	CONTAINER	spaced @ 18" o.c.
PVS	230	PANICUM VIRGATUM 'SHENANDOAH'	SHENANDOAH SWITCH GRASS	2 GAL.	CONTAINER	-
SSCO	220	SCHIZACHYRIUM SCOPARIUM	LITTLE BLUESTEM	2 GAL.	CONTAINER	-

Buffer and Site Planting Palette



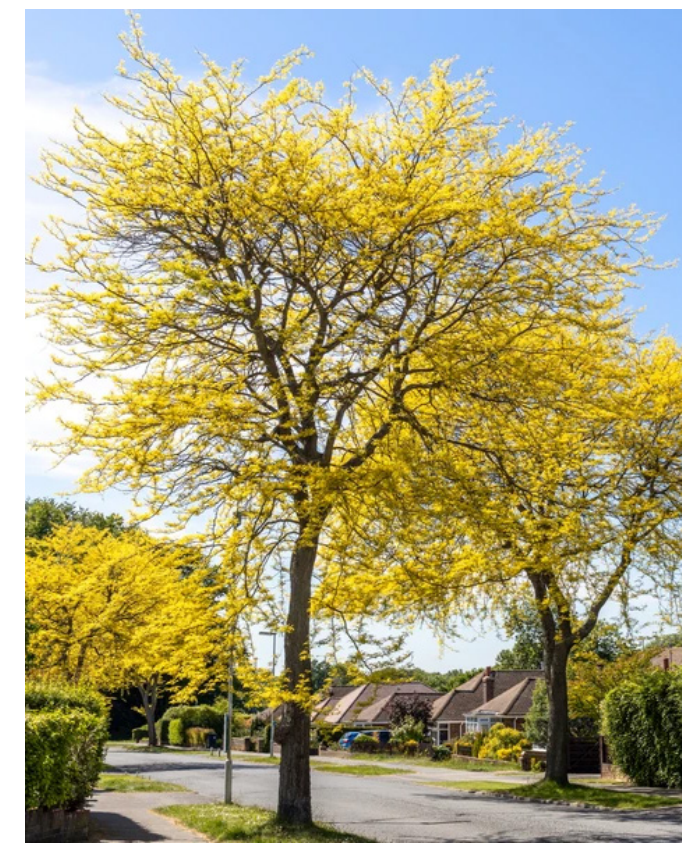
AR- *Acer rubrum*
Red Maple



ASB- *Acer saccharum* 'Bonfire'
Bonfire Sugar Maple



GB- *Ginkgo biloba*
Maidenhair Tree Ginkgo



GTSB- *Gleditsia triacanthos inermis* 'Sunburst'
Sunburst Honey Locust



PLO- *Platanus occidentalis*
American Sycamore



QR- *Quercus rubra*
Red Oak



TCG- *Tilia cordata* 'Greenspire'
Greenspire Linden

Buffer Planting - Shade Trees



BN- *Betula nigra*
Multi Stem River Birch



CC- *Cercis canadensis*
Eastern Redbud

Buffer Planting - Understory Trees



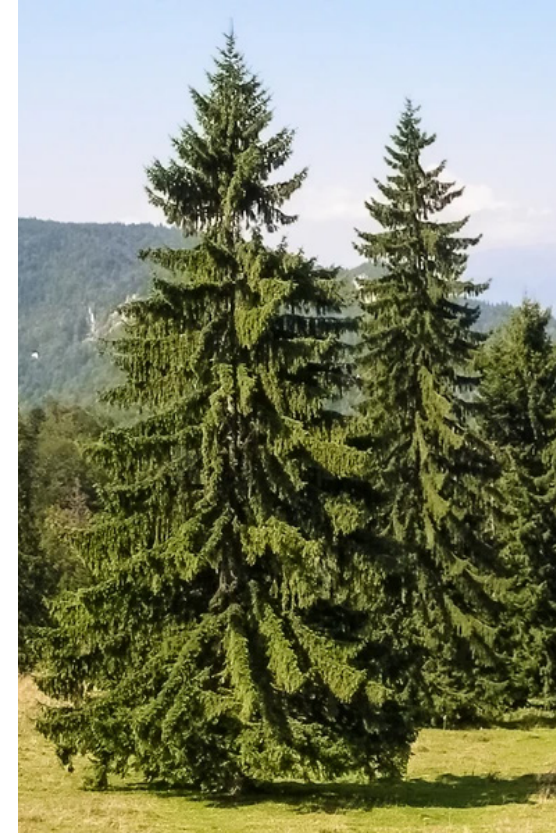
JV- *Juniper virginiana*
Eastern Red Cedar



PM- *Pseudotsuga menziesii*
Douglas Fir



PGL- *Picea glauca*
White Spruce



PIAB- *Picea abies*
Norway Spruce



PS- *Pinus strobus*
Eastern White Pine

Buffer Planting - Evergreen Trees



AAB-*Aronia arbutifolia* 'Brilliantissima'
Red Chokeberry



HVCW- *Hamamelis virginiana*
Common Witchhazel



VD- *Viburnum Dentatum*
Arrowwood Viburnum



MP- *Myrica pennsylvanica*
Northern Bayberry

Buffer Planting - Shrubs



CS- *Cornus sericea* (formerly *stolonifera*)
Red Osier Dogwood



IGN- *Ilex glabra* 'Nigra'
Nigra Inkberry



CSF- *Cornus sericea* 'Flaviramea'
Yellow Twig Dogwood



JHBH- *Juniperus horizontalis* 'Bar Harbor'
Bar Harbor Creeping Juniper

Site Planting - Shrubs



FG- *Fothergilla gardenii*
Dwarf Fothergilla



CAH- *Clethra alnifolia* 'Hummingbird'
Sweet Pepperbush



RAG- *Rhus aromatica* 'Gro Low'
Gro Low Fragrant Sumac



IWR- *Ilex verticillata* 'Winter Red'
Winter Red Winterberry Holly



IGS- *Ilex glabra* 'Shamrock'
Shamrock Inkberry Holly

Site Planting - Shrubs



PVS- *Panicum virgatum* 'Shenandoah'
Shenandoah Switch Grass



BGBA- *Bouteloua gracilis* 'Blonde Ambition'
Blue Grama Grass



SSCO- *Schizachyrium scoparium*
Little Bluestem



BPA- *Baptisia australis*
Blue False Indigo

Site Planting - Grasses and Perennials