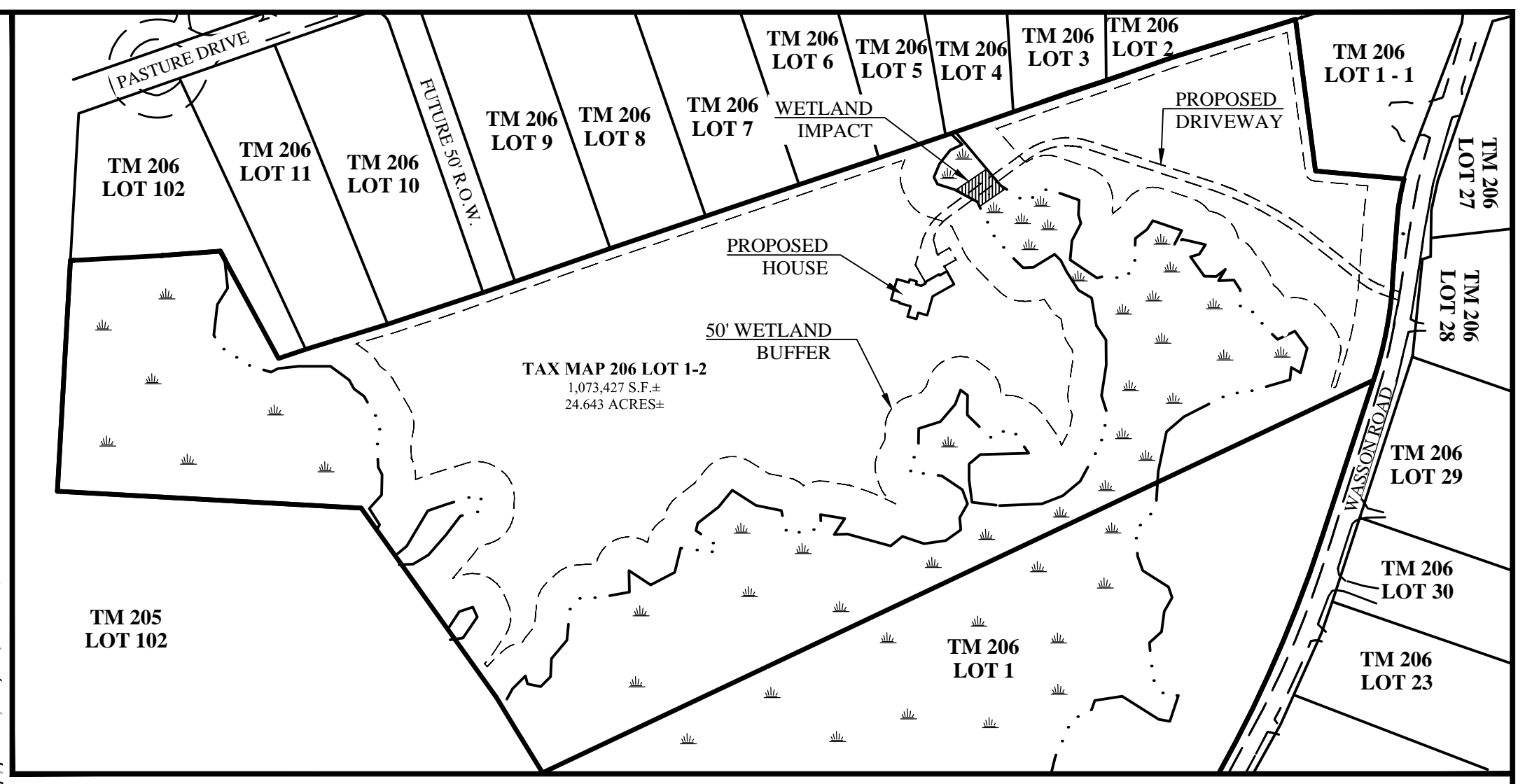
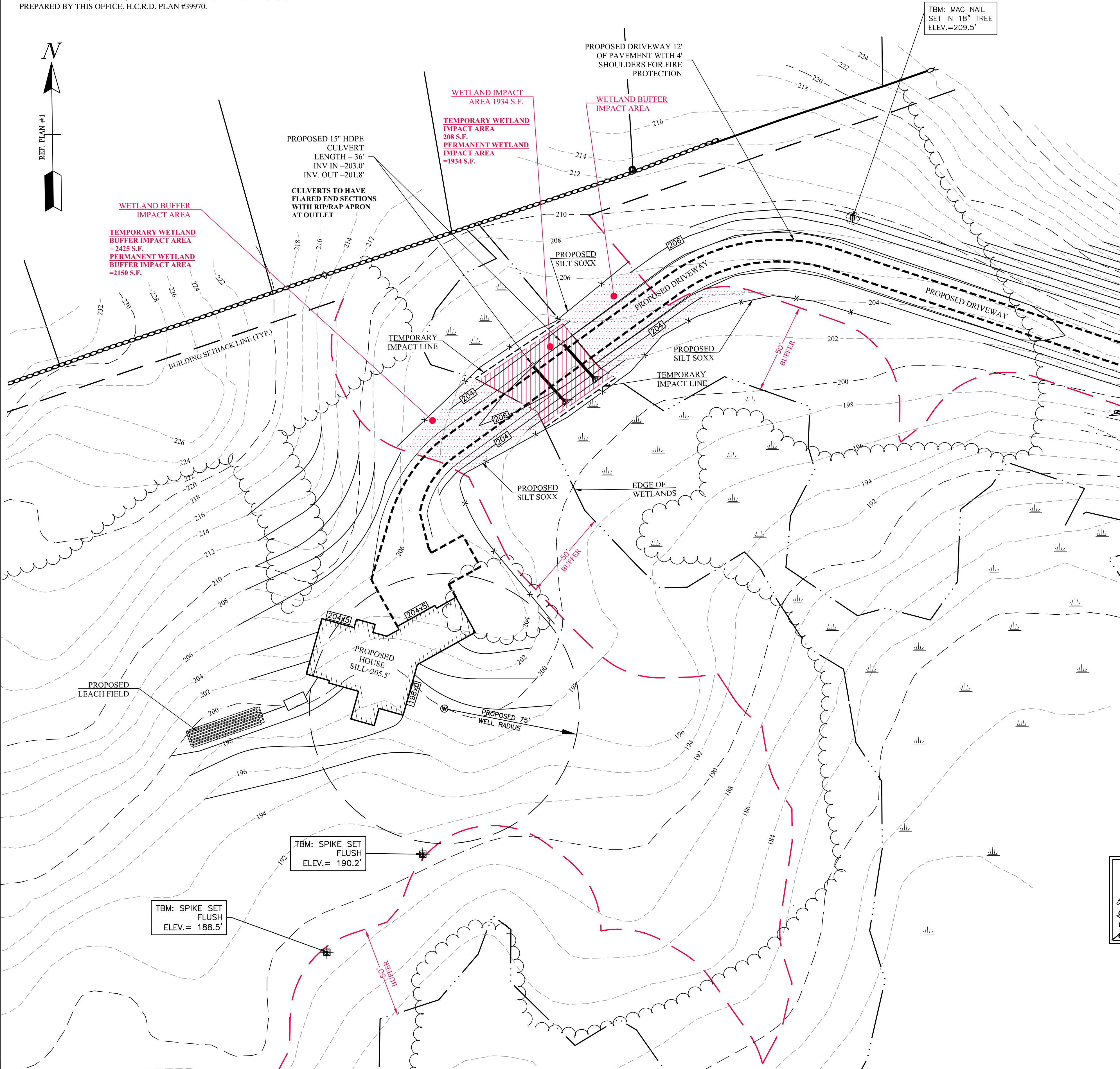
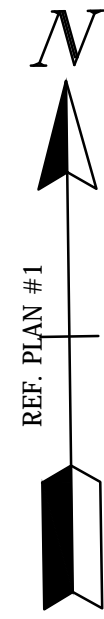


REFERENCE PLAN

1. "TAX MAP 206, LOT 1, OVERALL PLAN PREPARED FOR: MARCO PLANTE, LOCATED AT: WASON ROAD, HUDSON, NEW HAMPSHIRE." LAST REVISED 10/19/18 AND PREPARED BY THIS OFFICE. H.C.R.D. PLAN #39970.



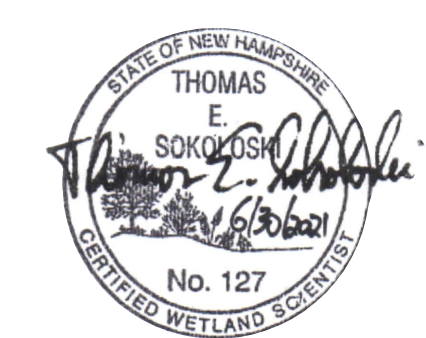
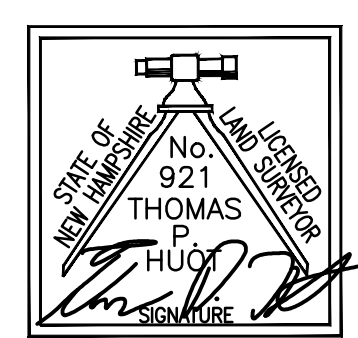
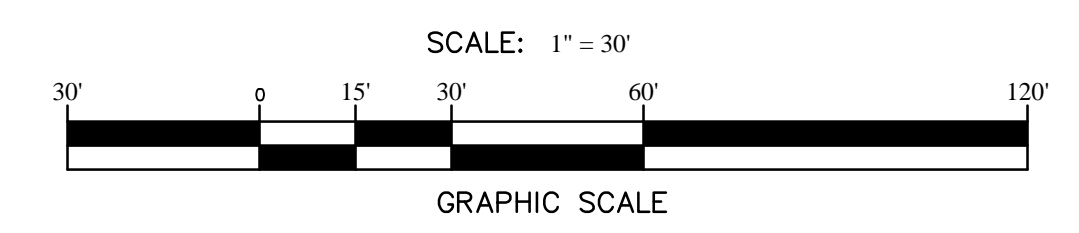
LOT OVERVIEW
SCALE: 1"=200'

GENERAL NOTES

- OWNERS OF RECORD:
TAX MAP 206 LOT 1-2
MARCO & CINDY PLANTE
124 BUSH HILL ROAD
HUDSON, NH 03051
BK: 6005 PG: 1918
- THE INTENT OF THIS PLAN IS TO SHOW A PROPOSED DRIVEWAY CROSSING IN SUPPORT OF A WETLAND PERMIT.
- THE SUBJECT AND ABUTTING PARCELS ARE ZONED "G". SETBACKS ARE AS FOLLOWS:
FRONT = 50'
SIDE = 15'
REAR = 15'
WETLANDS = 50' (BUFFER)
- THIS PLAN REPRESENTS EXISTING CONDITIONS, BOUNDARY EVIDENCE, AND MONUMENTATION AS OBSERVED DURING A SURVEY BY THIS OFFICE IN APRIL OF 2021.
- ALL UNDERGROUND UTILITIES SHOWN ARE APPROXIMATE. THIS OFFICE HAS NOT LOCATED ANY UNDERGROUND UTILITIES. ALWAYS CALL DIG SAFE TO MARK OUT UNDERGROUND UTILITIES PRIOR TO ANY EXCAVATION ACTIVITIES.
- DRIVEWAY GRADING AND CULVERT DESIGN DONE BY JON ROKEH, PE OF ROKEH CONSULTING, LLC.

WETLAND NOTE

THOMAS SOKOLOSKI, CERTIFIED WETLAND SCIENTIST #127, OF TES ENVIRONMENTAL CONSULTANTS, L.L.C. OF BOW, NH, PERFORMED THE WETLAND IDENTIFICATION AND DELINEATION ON MARCH 29 AND APRIL 7, 2021 ACCORDING TO THE CORPS OF ENGINEERS WETLAND DELINEATION MANUAL AND THE REGIONAL SUPPLEMENT TO THE CORPS OF ENGINEERS WETLAND DELINEATION MANUAL, NORTHCENTRAL AND NORTHEAST REGION, VERSION 2.0, JANUARY 2012, US ARMY CORPS OF ENGINEERS.



**TAX MAP 206 LOT 1-2
WETLAND PERMIT PLAN**
PREPARED FOR:
MARCO PLANTE
LOCATED AT:
**WASON ROAD
HUDSON, NEW HAMPSHIRE**

NO.	DATE	DESCRIPTION	BY
1.	8/5/21	ADD CULVERT	PDS

S&H LAND SERVICES, LLC
SHLANDSERVICES.COM
141 LONDONDERRY TPKE - HOOKSETT, NH
PHONE: (603)-628-8500, FAX: (603)-546-7791