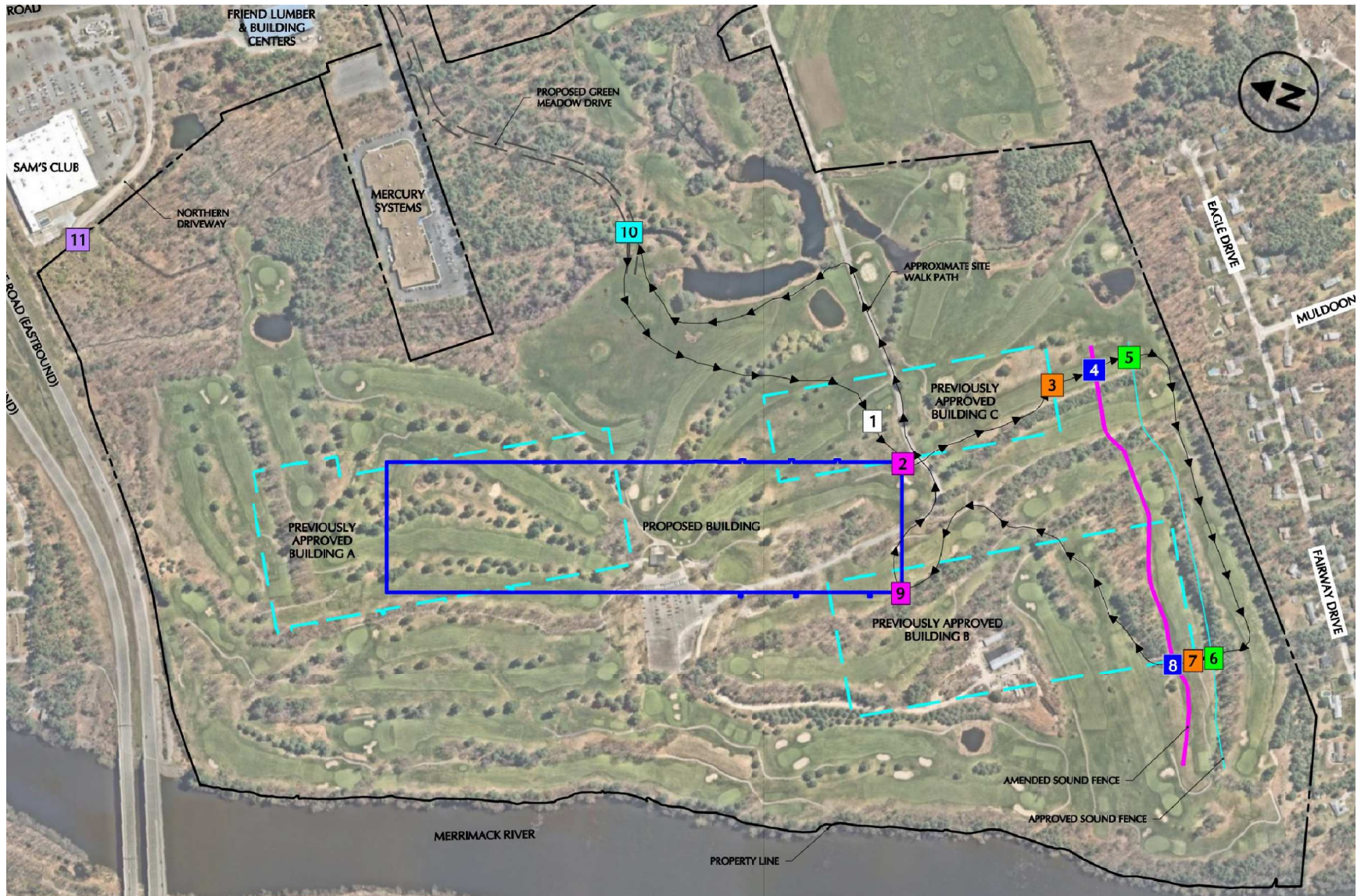
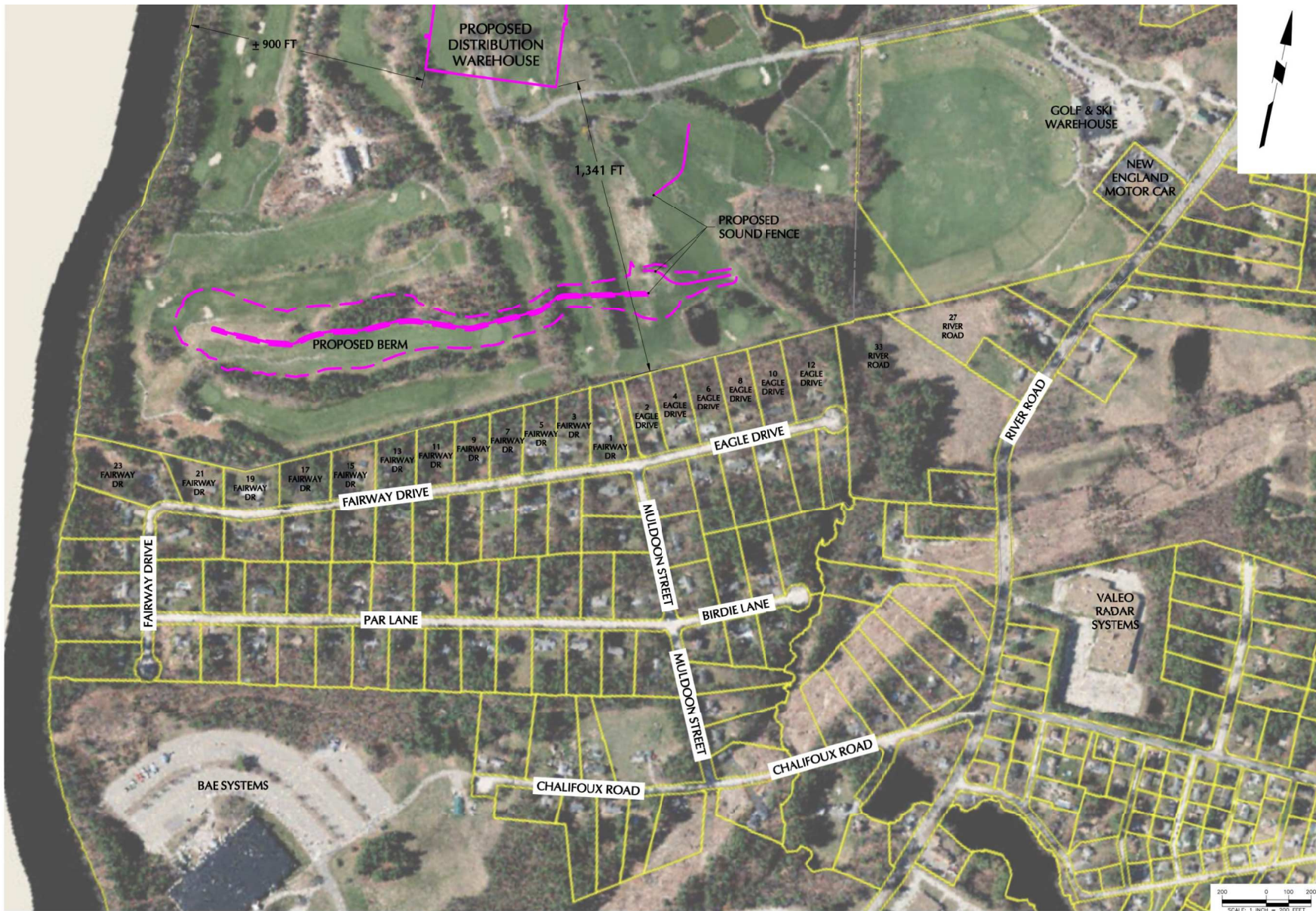


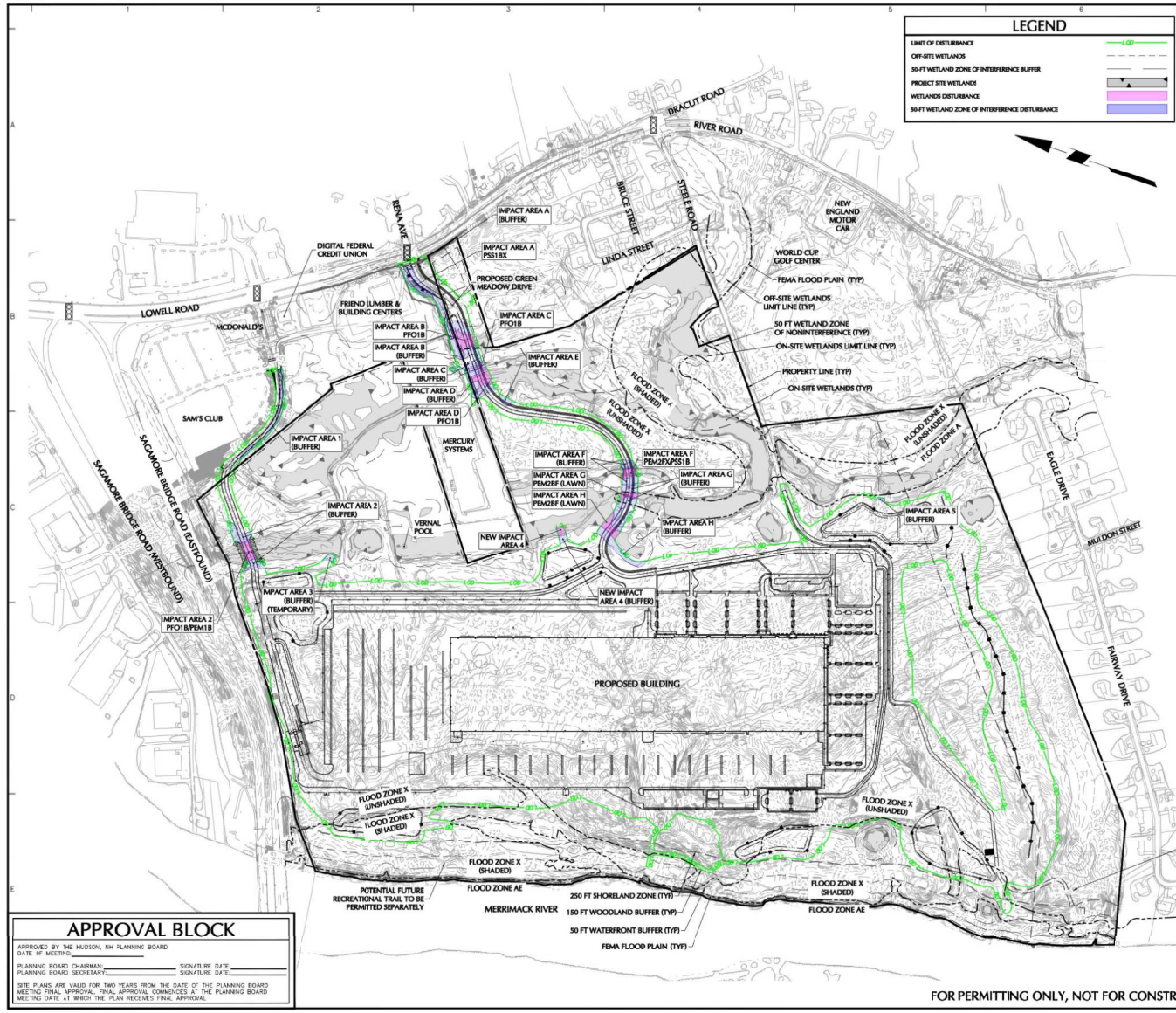
- 1** Parking area
(Middle of Approved Bldg. C)
- 2** Southeast Corner of Amended Building
- 3** Southerly Edge of Approved Building C
- 4** Amended Sound Fence
- 5** Approved Sound Fence
- 6** Approved Sound Fence
- 7** Southwest Corner of Approved Building B
- 8** Amended Sound Fence
- 9** Southwest Corner of Amended Building
- 10** Wetland Crossing
- 11** Northern Driveway (Optional)





AERIAL PLAN – GOLF COURSE BOUNDARIES





LEGEND	
LIMIT OF DISTURBANCE	---
OFF-SITE WETLANDS	---
50-FT WETLAND ZONE OF INTERFERENCE BUFFER	---
PROJECT SITE WETLANDS	---
WETLANDS DISTURBANCE	---
50-FT WETLAND ZONE OF INTERFERENCE DISTURBANCE	---

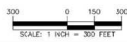
ANTICIPATED WETLAND DISTURBANCE				
IMPACT AREA	WETLAND CLASSIFICATION	REASON FOR IMPACT	DIRECT (SF)	50-FT BUFFER (SF)
A	DIURNAL BIRCH	ACCESS (Green Meadow Drive)	8,842	820,977
B	FORBIDDEN WETLAND	ACCESS (Green Meadow Drive)	810,700	224,572
C	FORBIDDEN WETLAND	ACCESS (Green Meadow Drive)	81,205	85,169
D	FORBIDDEN WETLAND	ACCESS (Green Meadow Drive)	8,841	815,287
E	FORBIDDEN WETLAND	ACCESS (Green Meadow Drive)	0	83,757
F	POND, EMERGENT SCUM, SHUB EDGE	ACCESS (Green Meadow Drive)	8,841	85,970
G	WET MAINTAINED LAWN	ACCESS (Green Meadow Drive)	8,355	811,256
H	WET MAINTAINED LAWN	ACCESS (Green Meadow Drive)	87,498	824,125
I	FORBIDDEN WETLAND	ACCESS (N. Access Road)	0	815,581
2	FORBIDDEN WETLAND PERENNIAL STREAM	ACCESS (N. Access Road)	89,366	815,549
3	FORBIDDEN WETLAND	STORMWATER FEATURE	0	82,284
4	FORBIDDEN WETLAND	STORMWATER FEATURE	82,812	82,287
5	EMERGENT, SCUM/SHUB EDGE	STORMWATER FEATURE	0	81,015
TOTAL ANTICIPATED DISTURBANCE			850,332	8152,729

NOTES:
 PROJECT SITE WETLANDS WERE SELECTED BY GONE ENVIRONMENTAL SERVICES, INC. BETWEEN NOVEMBER 2017 AND APRIL 2020 UTILIZING THE FOLLOWING STANDARDS:
 1. REGIONAL SUPPLEMENT TO THE CORPS OF ENGINEERS WETLAND DELINEATION MANUAL: NORTHCENTRAL AND NORTHEAST REGION, VERSION 2.0 JANUARY 2012, U.S. ARMY CORPS OF ENGINEERS
 2. FIELD INDICATORS OF HYDRIC SOILS IN THE UNITED STATES: A GUIDE FOR IDENTIFYING AND DELINEATING HYDRIC SOILS, VERSION 8.0, UNITED STATES DEPARTMENT OF AGRICULTURE (2016)
 3. NEW ENGLAND HYDRIC SOILS TECHNICAL COMMITTEE, 2018 VERSION 4, FIELD INDICATORS FOR IDENTIFYING HYDRIC SOILS IN NEW ENGLAND, NEW ENGLAND INTERSTATE WATER POLLUTION CONTROL COMMISSION, LOWELL, MA
 4. NATIONAL WETLAND PLANT LIST, VERSION 3.2 (2016)
 ALL FLAGS WERE LOCATED BY HAYNER/SWANSON, INC USING EITHER GPS UNIT AT TIME OF FLAGGING OR FIELD LOCATED BETWEEN NOVEMBER 2017 AND APRIL 2020. WETLANDS DEPicted OUTSIDE THE PROJECT AREA WERE OBTAINED FROM 2008 RECORD PLANS.

Date	Description	No.
Revisions		
<p>LANGAN Langan Engineering and Environmental Services, Inc. 100 CAMBRIDGE STREET SUITE 1310 Boston, MA 02114 T: 617.824.9100 F: 617.824.9101 www.langan.com</p>		
Project		
<p>HUDSON LOGISTICS CENTER MAP No. 239, LOT No. 1 HUDSON NEW HAMPSHIRE</p>		
Drawing Title		
<p>WETLAND IMPACT PLAN</p>		
Project No.	Figure	
151010101		
Date		
09/09/2022		
Drawn By		
RIS		
Checked By		
TDO		

APPROVAL BLOCK
 APPROVED BY THE HUDSON, NH PLANNING BOARD
 DATE OF MEETING: _____
 PLANNING BOARD CHAIRMAN: _____ SIGNATURE DATE: _____
 PLANNING BOARD SECRETARY: _____ SIGNATURE DATE: _____
 SITE PLANS ARE VALID FOR TWO YEARS FROM THE DATE OF THE PLANNING BOARD MEETING FINAL APPROVAL. FINAL APPROVAL COMMENCES AT THE PLANNING BOARD MEETING DATE. AT WHICH THE PLAN RECEIVES FINAL APPROVAL.

FOR PERMITTING ONLY, NOT FOR CONSTRUCTION



DATE: 10/20/2022 TIME: 12:38 USER: mlabbingh Style: Title Langan.vb Layout: 05P Document Code: F003-151010101-001-C01-10-100